

**MOUNTING DETAIL**  
SCALE: 3/4"=1'-0"

**GENERAL CONTRACT CONDITIONS**  
ELECTRICAL WORK DONE BY CADDY CORPORATION IS EXECUTED IN COMPLIANCE WITH STANDARDS PUBLISHED BY THE UNDERWRITER'S LABORATORIES, INC. INSOFAR AS APPLICABLE, AND THE LATEST EDITION OF THE NATIONAL ELECTRICAL CODE (NEC). CADDY CORPORATION DOES NOT ACCEPT ANY RESPONSIBILITY FOR THE REQUIREMENTS OF ANY REGIONAL AND/OR LOCAL CODES THAT ADD OR DEVIATED FROM THE ACCEPTED STANDARDS OF THE ABOVE AGENCIES. ANY FIELD WORK RELATING TO THE MODIFICATION OF ELECTRIC OR PLUMBING SYSTEMS, TO MEET REGIONAL OR LOCAL CODE REQUIREMENTS IS TO BE DONE BY OTHERS AND WITHOUT BACK CHARGES TO CADDY CORPORATION, UNLESS THESE CONDITIONS WERE PREVIOUSLY BROUGHT TO OUR ATTENTION AND ARE EXPRESSLY INCLUDED IN OUR WRITTEN QUOTATION.  
ALL WIRING AND PLUMBING AT THE JOB SITE IS THE RESPONSIBILITY OF OTHERS. EQUIPMENT WILL BE CONSTRUCTED IN ACCORDANCE WITH OUR DRAWING(S) WHICH MUST BE APPROVED PRIOR TO FABRICATION. ANY SUBSEQUENT CHANGES REQUIRED MUST BE SUBMITTED TO US IN WRITING AND ACKNOWLEDGED ON OUR STANDARD FORM.

DIMENSIONAL DATA	
LENGTH OF FILTER/ODOR UNIT	7'-2 1/2"
LENGTH OF MOTOR UNIT	4'-9 3/8"
WIDTH OF FILTER/ODOR UNIT	5'-5"
WIDTH OF MOTOR UNIT	5'-5"
HEIGHT OF FILTER/ODOR UNIT	3'-0"
HEIGHT OF MOTOR UNIT	3'-0"

"PURE-AIR" GREASE & ODOR REDUCTION SYSTEM  
4,550 CFM

REVISIONS			
REV	DATE	BY	REMARKS
A	12-19-03	DRA	NO CHANGES TO THIS SHEET
B	1-20-04	DRA	NO CHANGES TO THIS SHEET
C	4-2-04	DRA	NO CHANGES TO THIS SHEET
D	5-3-04	DRA	REVISED PER APPROVED DRAWING
E	5-12-04	AGR	AS-BUILTS

**CADDY AirSystems**  
509 SHARPTOWN ROAD  
P.O. BOX 345 BRIDGEPORT NJ 08014  
Tel:(856) 467-4222 Fax:(856) 467-5511

**EQUIPMENT SCHEDULE**

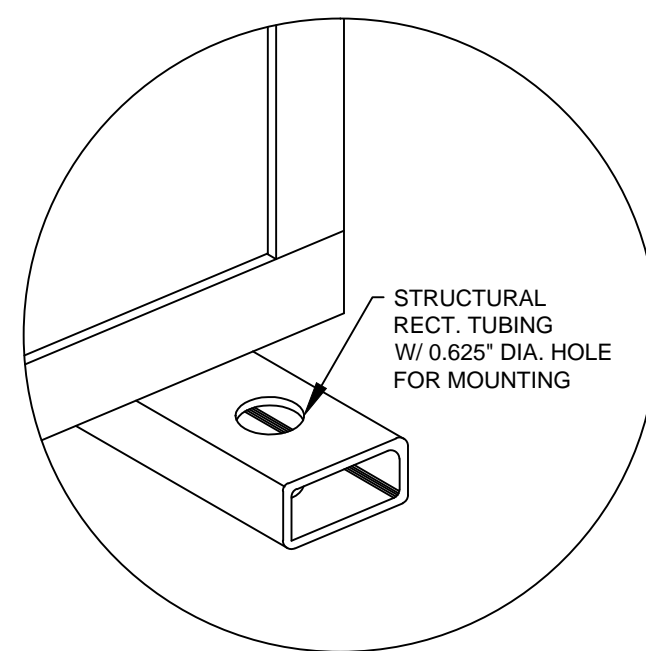
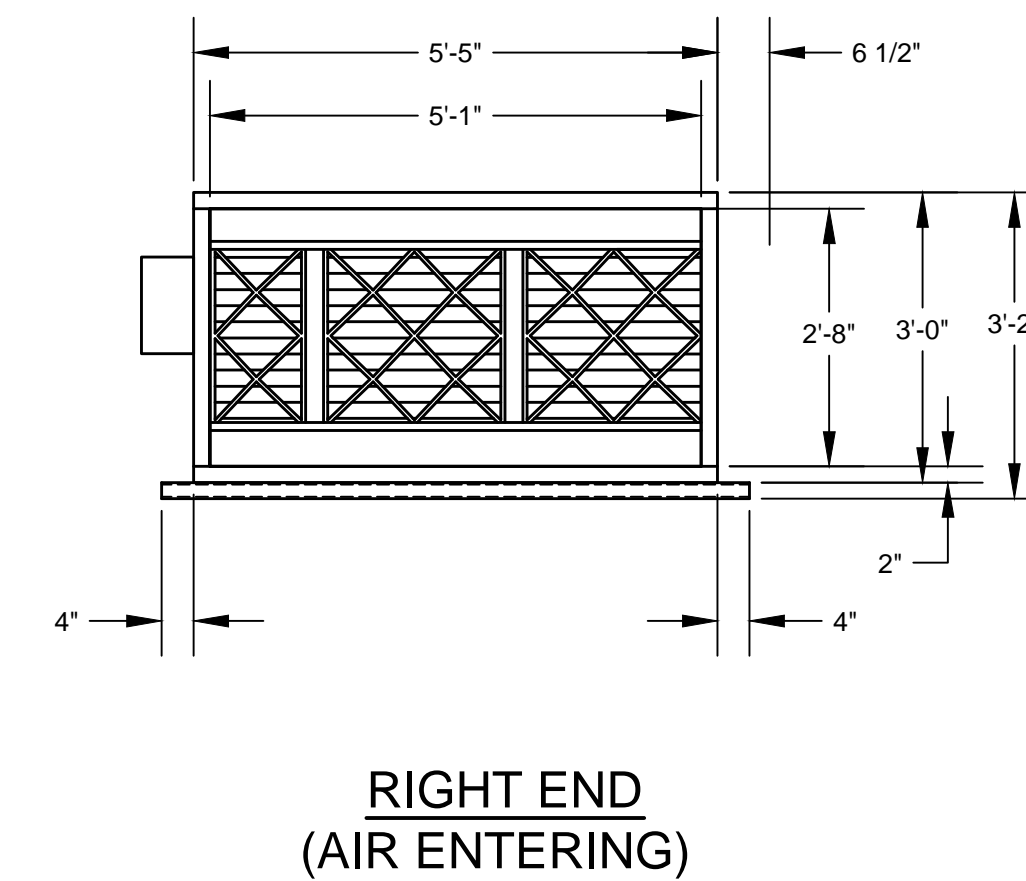
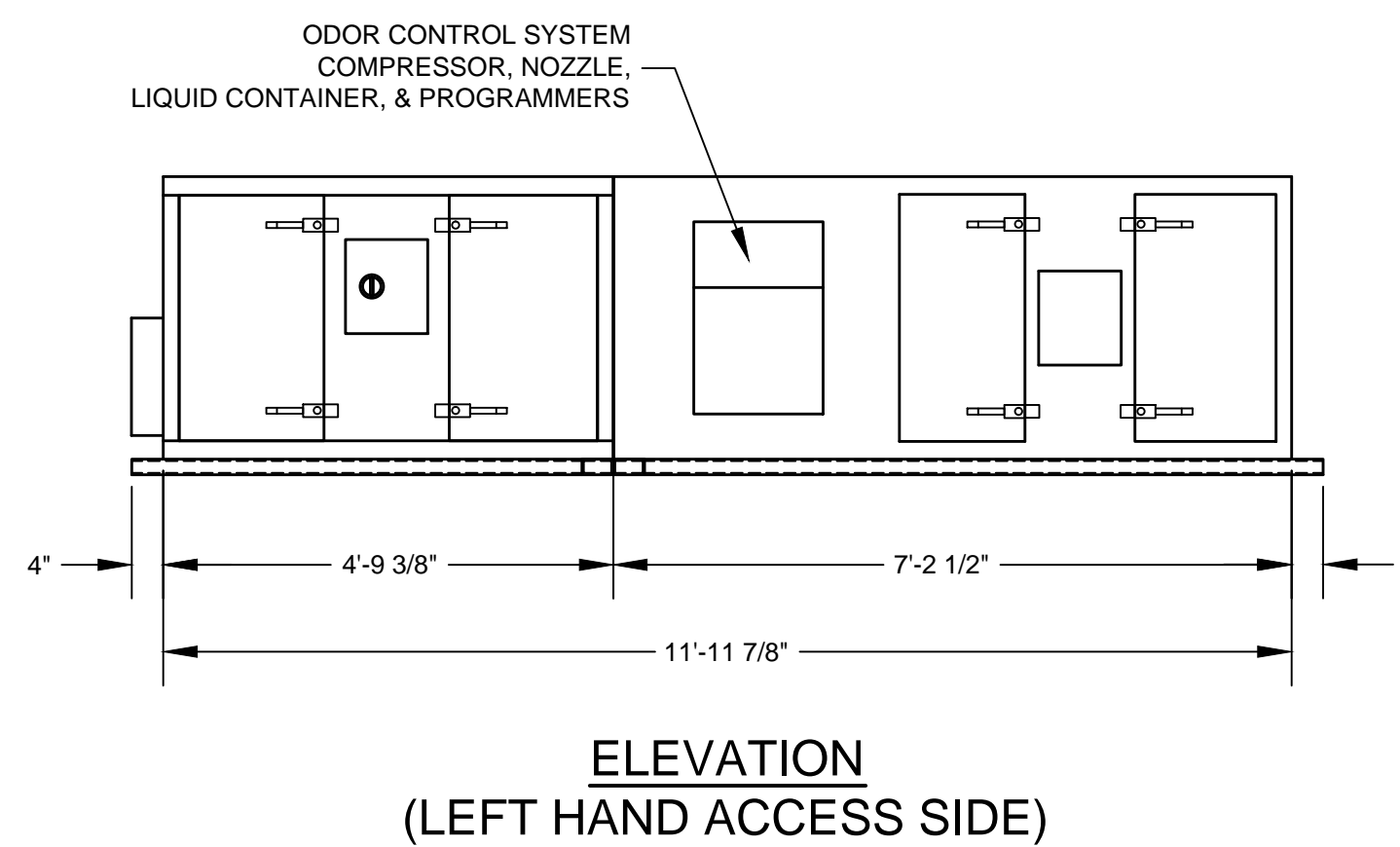
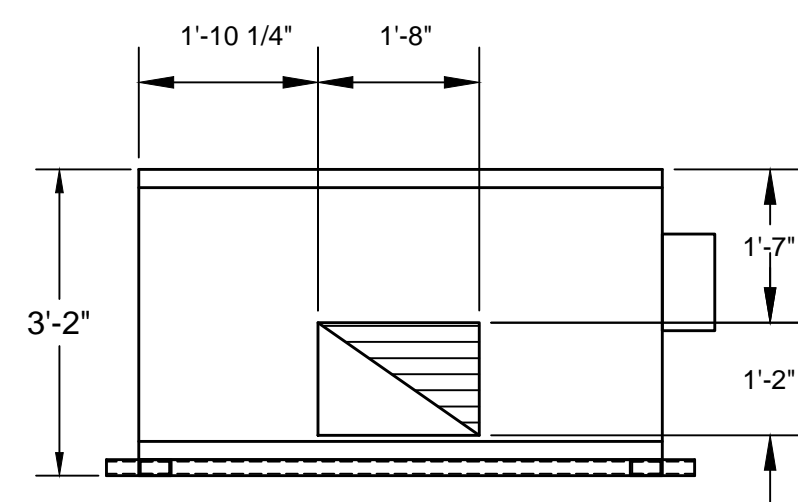
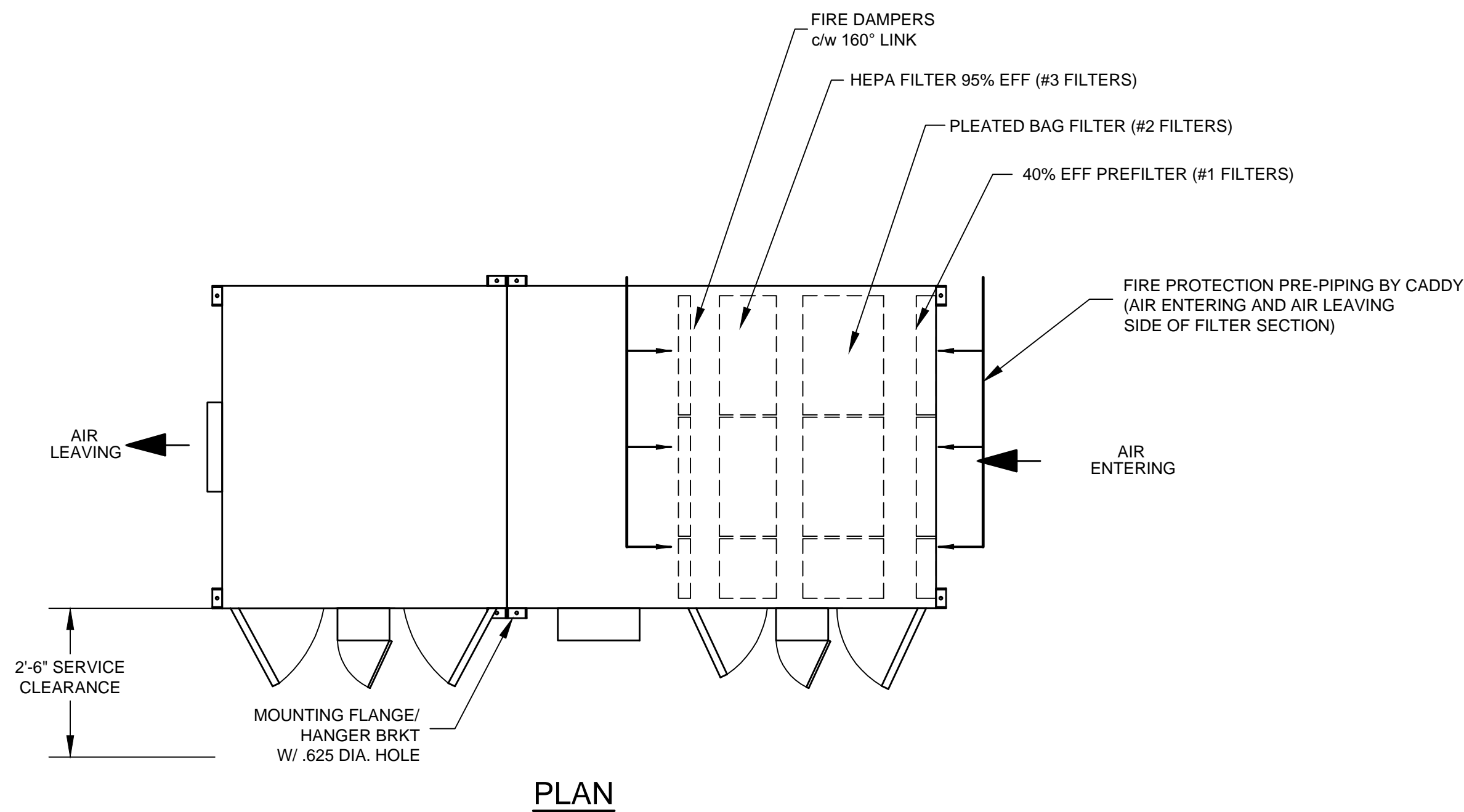
CAS-KEF-5000  
ISOMETRIC WITH ODOR

CADDY NO. 1059 ITEM NO. G01

JOB: MICHAEL MINA  
ST. FRANCIS HOTEL  
LOC: SAN FRANCISCO, CA.  
CUST:  
CUST#:

DATE: 12/01/03 SCALE: AS NOTED  
DR BY: DRA APP'D BY:

**DWG# D-2-1059** SHT 1 OF 6



SCALE: 3/4"=1'-0"

**GENERAL CONTRACT CONDITIONS**  
 ELECTRICAL WORK DONE BY CADDY CORPORATION IS EXECUTED IN COMPLIANCE WITH STANDARDS PUBLISHED BY THE UNDERWRITERS LABORATORIES, INC. INSOFAR AS APPLICABLE, AND THE LATEST EDITION OF THE NATIONAL ELECTRICAL CODE (NEC). CADDY CORPORATION DOES NOT ACCEPT ANY RESPONSIBILITY FOR THE REQUIREMENTS OF ANY REGIONAL AND/OR LOCAL CODES THAT ADD OR DEVIATED FROM THE ACCEPTED STANDARDS OF THE ABOVE AGENCIES. ANY FIELD WORK RELATING TO THE MODIFICATION OF ELECTRIC OR PLUMBING SYSTEMS, TO MEET REGIONAL OR LOCAL CODE REQUIREMENTS IS TO BE DONE BY OTHERS AND WITHOUT BACK CHARGES TO CADDY CORPORATION, UNLESS THESE CONDITIONS WERE PREVIOUSLY BROUGHT TO OUR ATTENTION AND ARE EXPRESSLY INCLUDED IN OUR WRITTEN QUOTATION.  
 ALL WIRING AND PLUMBING AT THE JOB SITE IS THE RESPONSIBILITY OF OTHERS. EQUIPMENT WILL BE CONSTRUCTED IN ACCORDANCE WITH OUR DRAWING(S) WHICH MUST BE APPROVED PRIOR TO FABRICATION. ANY SUBSEQUENT CHANGES REQUIRED MUST BE SUBMITTED TO US IN WRITING AND ACKNOWLEDGED ON OUR STANDARD FORM.

FILTER DATA- AT FULL LOAD CAPACITY						GENERAL DATA		MOTOR DATA	
FILTER NO.	TYPE	SIZE	CAPACITY	QTY.	S.P.(IN W.C.)	MAXIMUM AIR EXHAUST	5,000 C.F.M.	HORSEPOWER	10 HP
1	40% PRE-FILTER	24" X 12" X 4"	1,000 CFM	1		DESIGN AIR EXHAUST	4,550 C.F.M.	POWER	6.77 BHP
		24" X 24" X 4"	2,000 CFM	2		TOTAL STATIC PRESSURE	4.5" W.C.	FULL LOAD AMPS	11
2	95% PLEATED BAG FILTER	24" X 12" X 22"	1,000 CFM	1		EXTERNAL STATIC PRESSURE	2" W.C.	MOTOR RPM	1725
		24" X 24" X 22"	2,000 CFM	2		PANEL ACCESS	LEFT HAND	VOLTAGE	208/3/60
3	95% HEPA FILTER	24" X 12" X 11.5"	1,000 CFM	1		FILTER SECTION WEIGHT	1,724 LBS.	PHASE	3
		24" X 24" X 11.5"	2,000 CFM	2		MOTOR SECTION WEIGHT	1,625 LBS.		
ODOR CONTROL SECTION - 22L LIQUID MEDIA						MOUNTING	CEILING HUNG		

REVISIONS			
REV	DATE	BY	REMARKS
A	12-19-03	DRA	NO CHANGES TO THIS SHEET
B	1-20-04	DRA	NO CHANGES TO THIS SHEET
C	4-2-04	DRA	NO CHANGES TO THIS SHEET
D	5-3-04	DRA	REVISED PER APPROVED DRAWINGS
E	5-12-04	AGR	AS-BUILTS
DATE	12/01/03	SCALE	AS NOTED
DR BY	DRA	APP'D BY	

**CADDY AirSystems**  
 509 SHARPTOWN ROAD  
 P.O. BOX 345 BRIDGEPORT NJ 08014  
 Tel:(856) 467-4222 Fax:(856) 467-5511

**EQUIPMENT SCHEDULE**

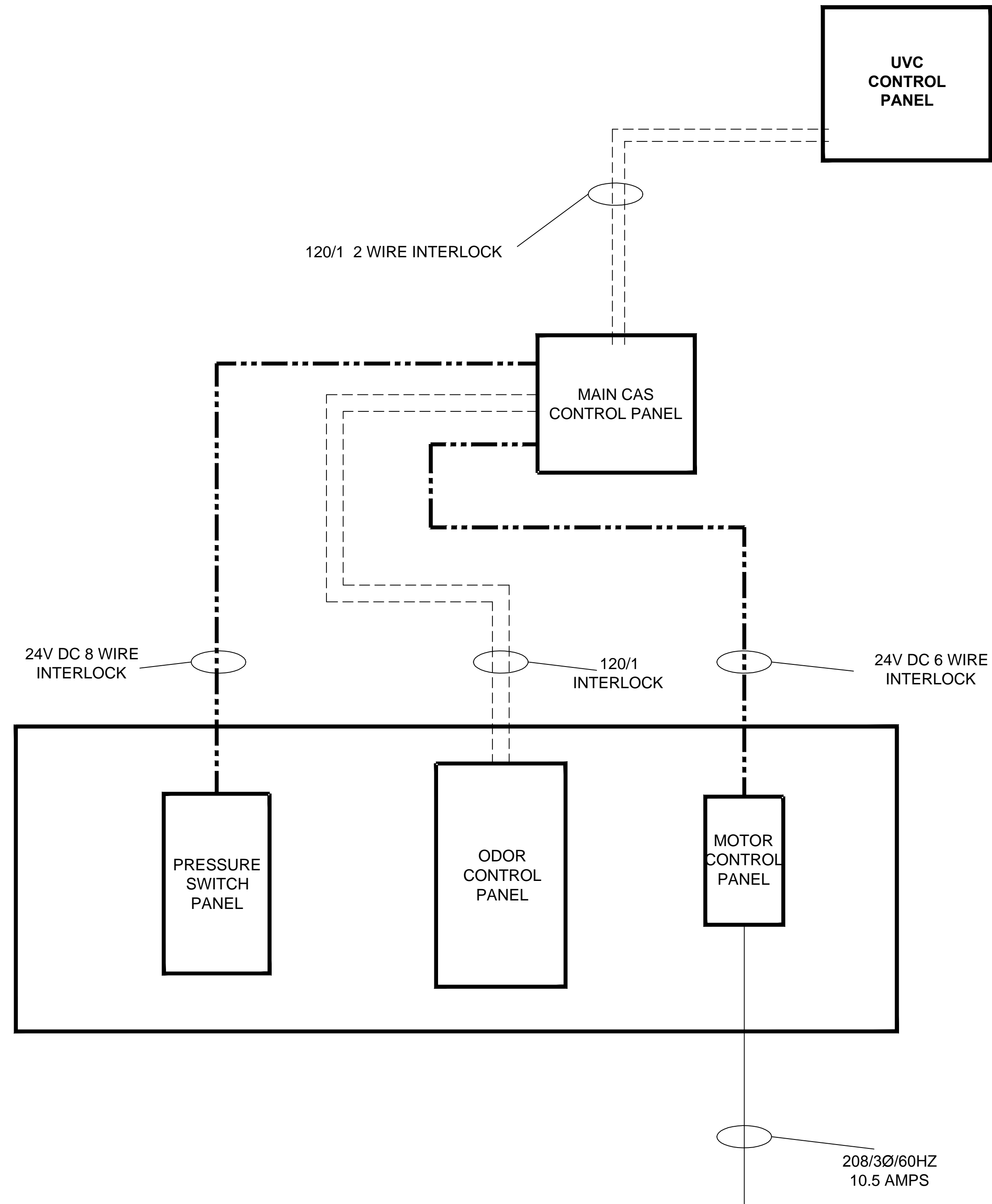
CAS-KEF-5000  
 GENERAL LAYOUT WITH ODOR

CADDY NO. 1059 ITEM NO. G01

JOB: MICHAEL MINA  
 ST. FRANCIS HOTEL  
 LOC: SAN FRANCISCO, CA.  
 CUST:  
 CUST#:

**DWG# D-2-1059**

SHT 2 OF 6



**INSTALLATION INFORMATION**  
 ALLOW SUFFICIENT AREA TO MOUNT UVC CONTROL BOX ON CLOSEST STRUCTURAL WALL TO VENTILATOR  
 MAXIMUM UVC CONTROL BOX DIMENSIONS  
 14" LONG x 6 3/8" DEEP x 16" HIGH  
 ESTIMATED TOTAL HANGING WEIGHT: 30 LBS.

-----	120 VOLT SUPPLY AND INTERLOCK WIRING BY ELECTRICIAN
-----	120 VOLT SUPPLY AND INTERLOCK WIRING BY ELECTRICIAN
-----	24 VOLT DC WIRING BY OTHERS
-----	208 VOLT SUPPLY AND INTERLOCK WIRING BY ELECTRICIAN
-----	NOTE : • 10.5 AMP 208/3 SUPPLY TO FAN MOTOR

**GENERAL CONTRACT CONDITIONS**  
 ELECTRICAL WORK DONE BY CADDY CORPORATION IS EXECUTED IN COMPLIANCE WITH STANDARDS PUBLISHED BY THE UNDERWRITER'S LABORATORIES, INC. INSOFAR AS APPLICABLE, AND THE LATEST EDITION OF THE NATIONAL ELECTRICAL CODE (NEC). CADDY CORPORATION DOES NOT ACCEPT ANY RESPONSIBILITY FOR THE REQUIREMENTS OF ANY REGIONAL AND/OR LOCAL CODES THAT ADD OR DEVIATED FROM THE ACCEPTED STANDARDS OF THE ABOVE AGENCIES. ANY FIELD WORK RELATING TO THE MODIFICATION OF ELECTRIC OR PLUMBING SYSTEMS, TO MEET REGIONAL OR LOCAL CODE REQUIREMENTS IS TO BE DONE BY OTHERS AND WITHOUT BACK CHARGES TO CADDY CORPORATION, UNLESS THESE CONDITIONS WERE PREVIOUSLY BROUGHT TO OUR ATTENTION AND ARE EXPRESSLY INCLUDED IN OUR WRITTEN QUOTATION.  
 ALL WIRING AND PLUMBING AT THE JOB SITE IS THE RESPONSIBILITY OF OTHERS. EQUIPMENT WILL BE CONSTRUCTED IN ACCORDANCE WITH OUR DRAWING(S) WHICH MUST BE APPROVED PRIOR TO FABRICATION. ANY SUBSEQUENT CHANGES REQUIRED MUST BE SUBMITTED TO US IN WRITING AND ACKNOWLEDGED ON OUR STANDARD FORM.

REVISIONS			
REV	DATE	BY	REMARKS
A	12-19-03	DRA	ADDED THIS SHEET
B	1-20-04	DRA	NO CHANGES TO THIS SHEET
C	4-2-04	DRA	NO CHANGES TO THIS SHEET
D	5-3-04	DRA	REVISED PER APPROVED DRAWINGS
E	5-12-04	AGR	AS-BUILTS

**CADDY AirSystems**  
 509 SHARPTOWN ROAD  
 P.O. BOX 345 BRIDGEPORT NJ 08014  
 Tel:(856) 467-4222 Fax:(856) 467-5511

**EQUIPMENT SCHEDULE**

CAS-KEF-5000

CADDY NO. 1059 ITEM NO. 2

JOB: MICHAEL MINA  
 ST. FRANCIS HOTEL  
 LOC: SAN FRANCISCO, CA.  
 CUST:  
 CUST#:

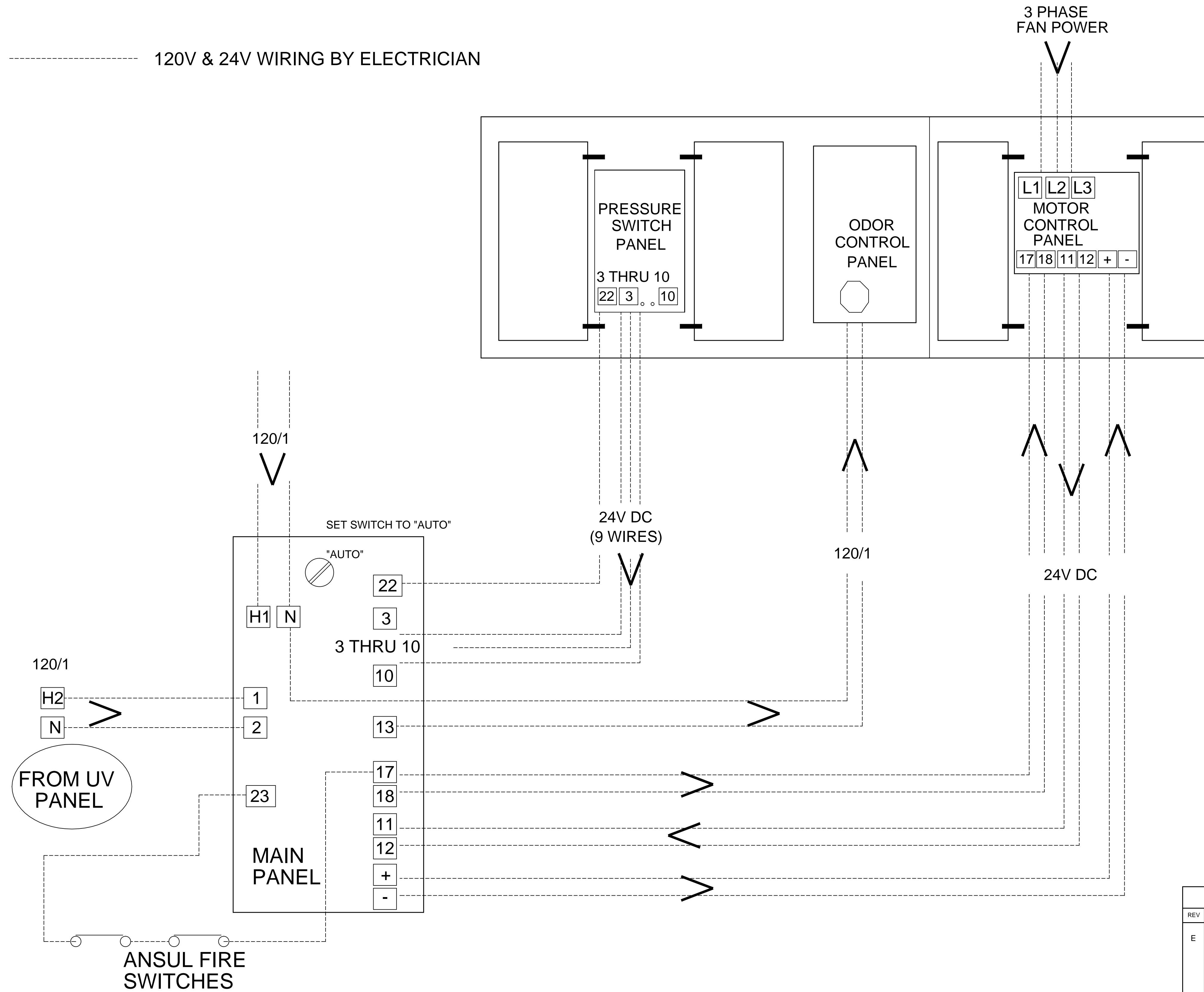
DATE	03/12/04	SCALE	AS NOTED
DR BY	DRA	APP'D BY	

**DWG# D-2-1059**

SHT 3  
 OF 6

CAS-KEF FIELD WIRING

----- 120V & 24V WIRING BY ELECTRICIAN



**GENERAL CONTRACT CONDITIONS**  
 ELECTRICAL WORK DONE BY CADDY CORPORATION IS EXECUTED IN COMPLIANCE WITH STANDARDS PUBLISHED BY THE UNDERWRITER'S LABORATORIES, INC. INsofar AS APPLICABLE, AND THE LATEST EDITION OF THE NATIONAL ELECTRICAL CODE (NEC). CADDY CORPORATION DOES NOT ACCEPT ANY RESPONSIBILITY FOR THE REQUIREMENTS OF ANY REGIONAL AND/OR LOCAL CODES THAT ADD OR DEVIATED FROM THE ACCEPTED STANDARDS OF THE ABOVE AGENCIES. ANY FIELD WORK RELATING TO THE MODIFICATION OF ELECTRIC OR PLUMBING SYSTEMS, TO MEET REGIONAL OR LOCAL CODE REQUIREMENTS IS TO BE DONE BY OTHERS AND WITHOUT BACK CHARGES TO CADDY CORPORATION, UNLESS THESE CONDITIONS WERE PREVIOUSLY BROUGHT TO OUR ATTENTION AND ARE EXPRESSLY INCLUDED IN OUR WRITTEN QUOTATION.  
 ALL WIRING AND PLUMBING AT THE JOB SITE IS THE RESPONSIBILITY OF OTHERS. EQUIPMENT WILL BE CONSTRUCTED IN ACCORDANCE WITH OUR DRAWING(S) WHICH MUST BE APPROVED PRIOR TO FABRICATION. ANY SUBSEQUENT CHANGES REQUIRED MUST BE SUBMITTED TO US IN WRITING AND ACKNOWLEDGED ON OUR STANDARD FORM.

REVISIONS			
REV	DATE	BY	REMARKS
E	5-11-04	AGR	ADDED THIS SHEET

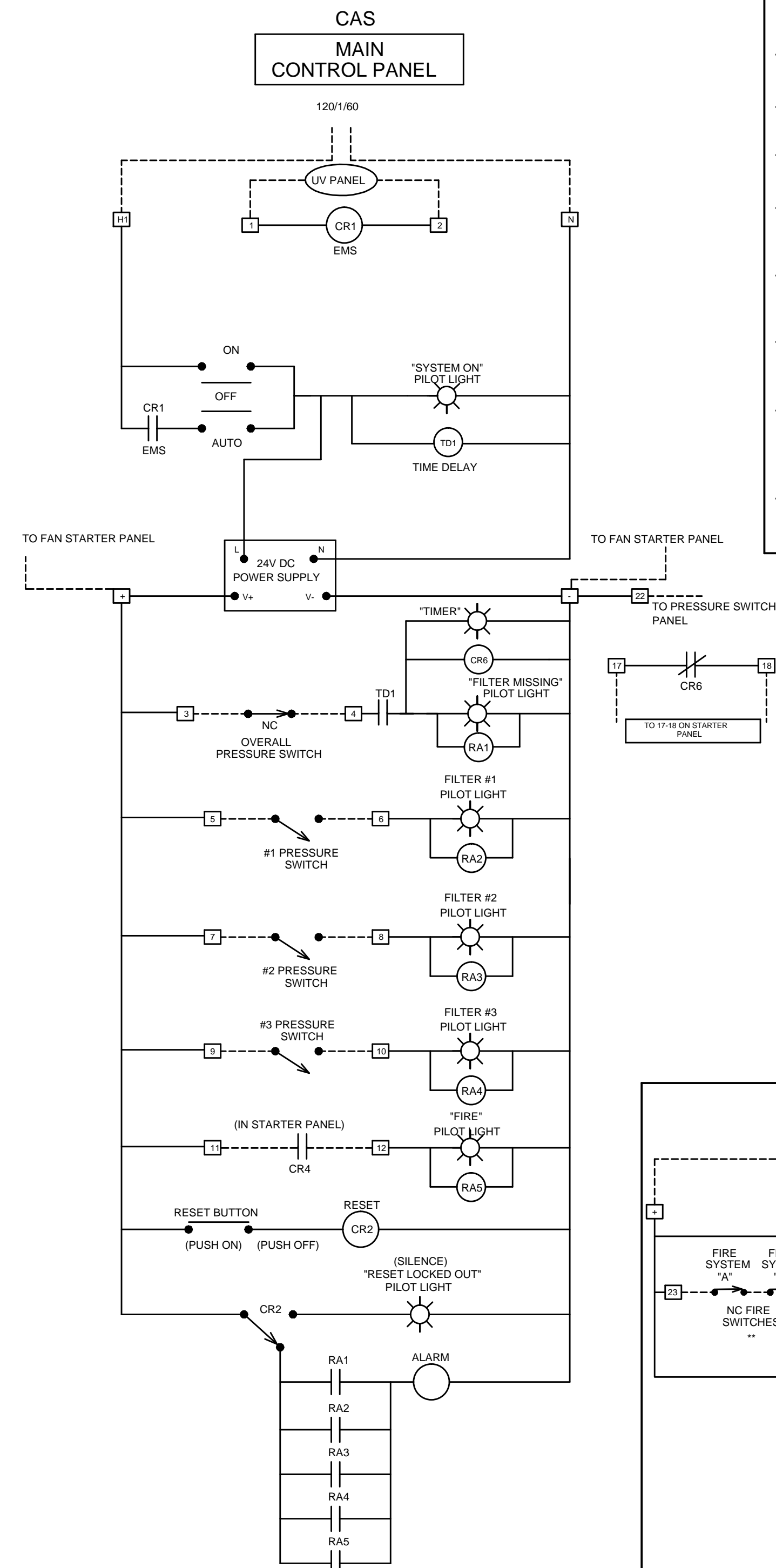
<p>509 SHARPTOWN ROAD                  P.O. BOX 345 BRIDGEPORT NJ 08014                  Tel:(856) 467-4222 Fax:(856) 467-5511</p>	
<p><b>EQUIPMENT SCHEDULE</b></p> <p>CAS-KEF-5000                  FIELD WIRING</p>	
CADDY NO. 1059	ITEM NO. 2
JOB: MICHAEL MINA ST. FRANCIS HOTEL LOC: SAN FRANCISCO, CA. CUST: CUST#:	

DATE	05/17/04	SCALE	AS NOTED
DR BY	AGR	APP'D BY	

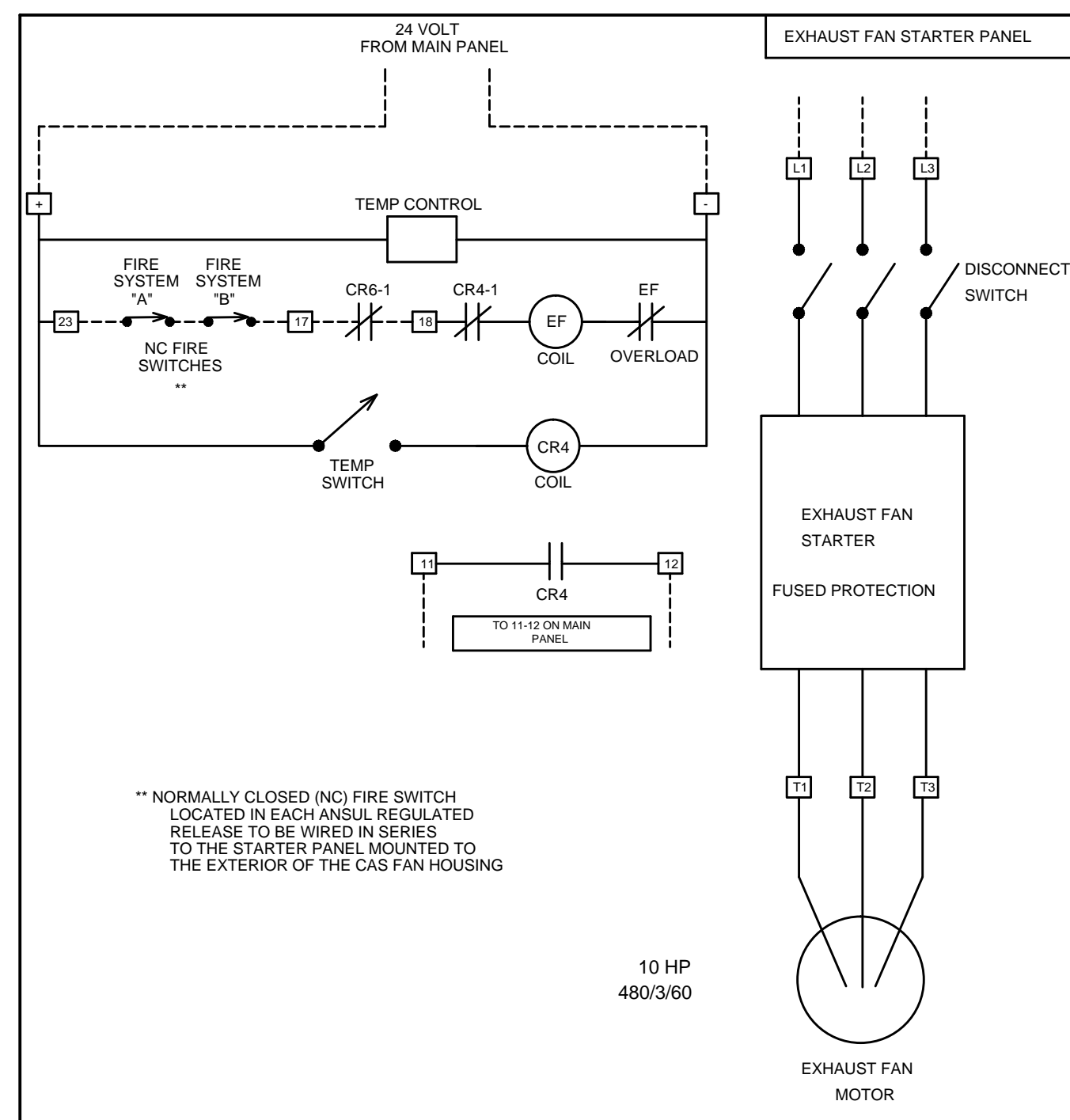
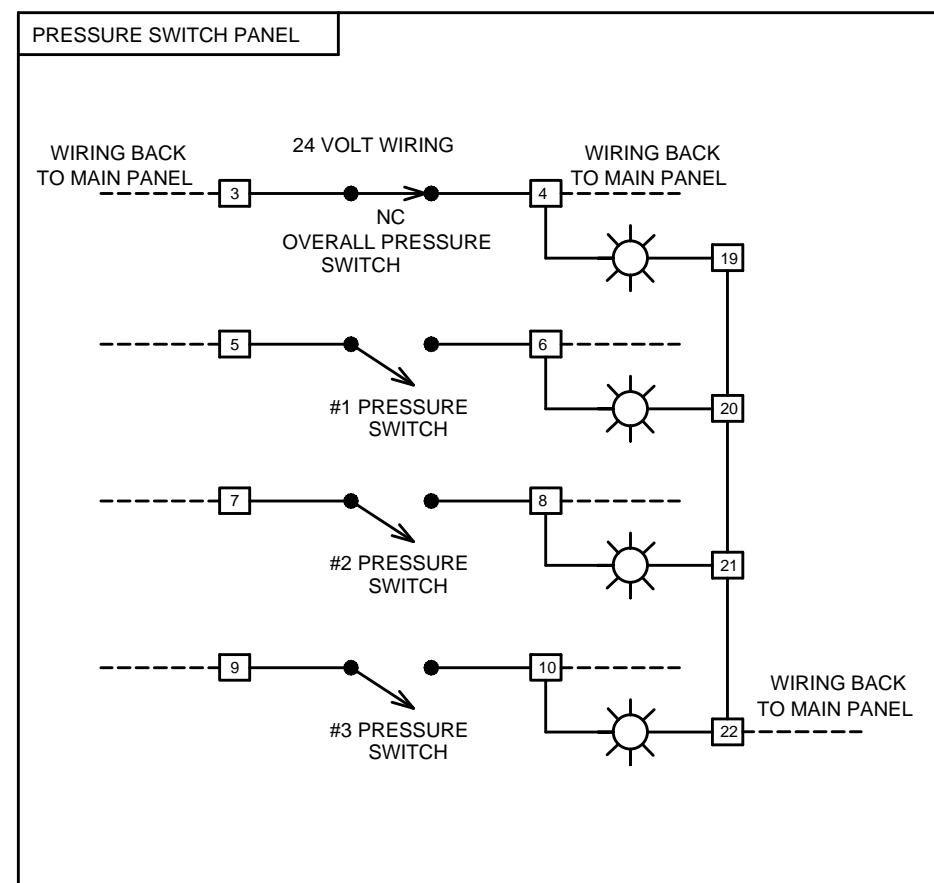
**DWG# D-2-1059** SHT 4  
OF 6

15735E



**SEQUENCE OF OPERATIONS**

- Main switch set to "Auto", "EMS" system will start system
- Main switch set to "Hand On" system will start
- Timer will override "Overall" Pressure switch until unit is up to speed
- If a filter is missing at start-up the unit will shut down and pilot light "Filter Missing" will energize
- If a filter becomes clogged and needs changing, the "Filter #" pilot light will be energized showing maintenance required
- If the temperature in the Exhaust fan housing goes above 350° the system will shut down "Excessive Heat in Unit" Pilot light will be energized
- All warning pilot lights (Red) are tied to an audible alarm. Alarm can be silenced by pushing "Silence Alarm" button. Pilot Light tied to alarm will stay lit till the warning/error has been fixed.
- Odor control is powered up at time of system activation.



REVISIONS			
REV	DATE	BY	REMARKS
E	5-11-04	AGR	ADDED THIS SHEET

**CADDY AirSystems**  
 509 SHARPTOWN ROAD  
 P.O. BOX 345 BRIDGEPORT NJ 08014  
 Tel:(856) 467-4222 Fax:(856) 467-5511

**EQUIPMENT SCHEDULE**

CAS-KEF WIRING DIAGRAM

CADDY NO. 1059 ITEM NO. 2

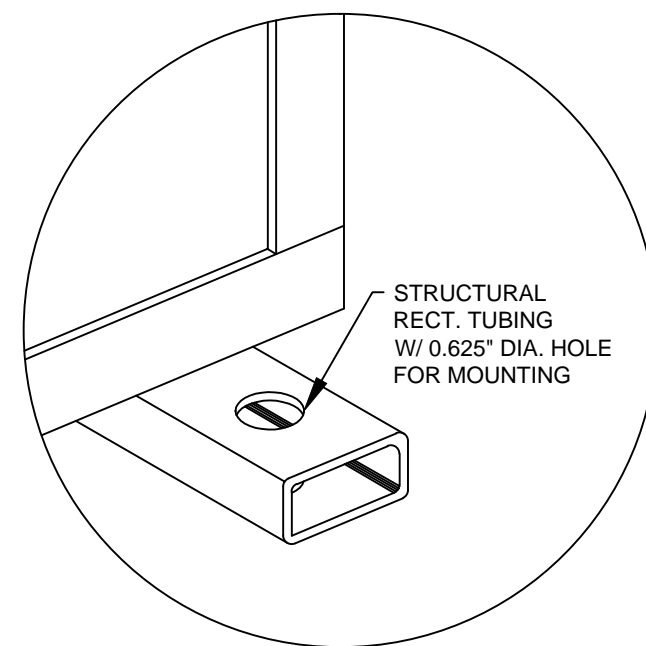
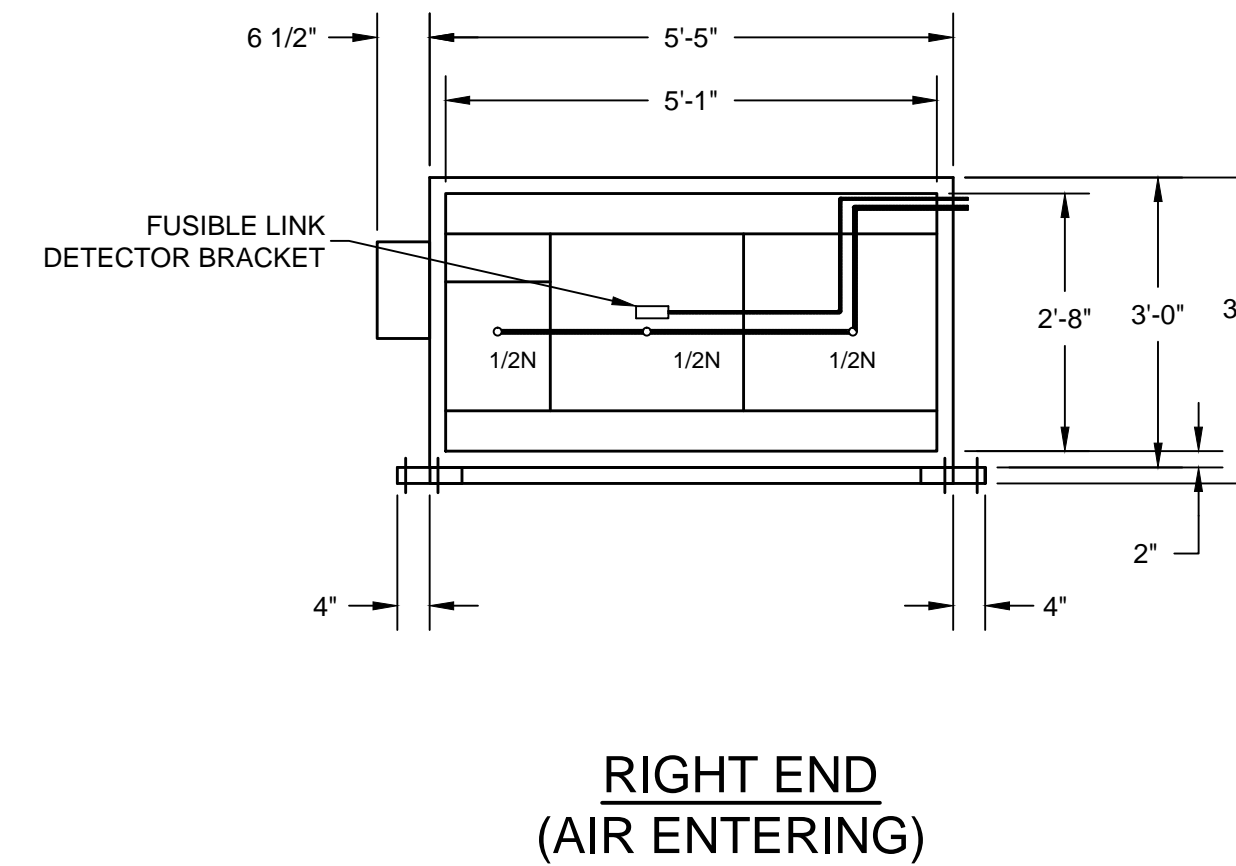
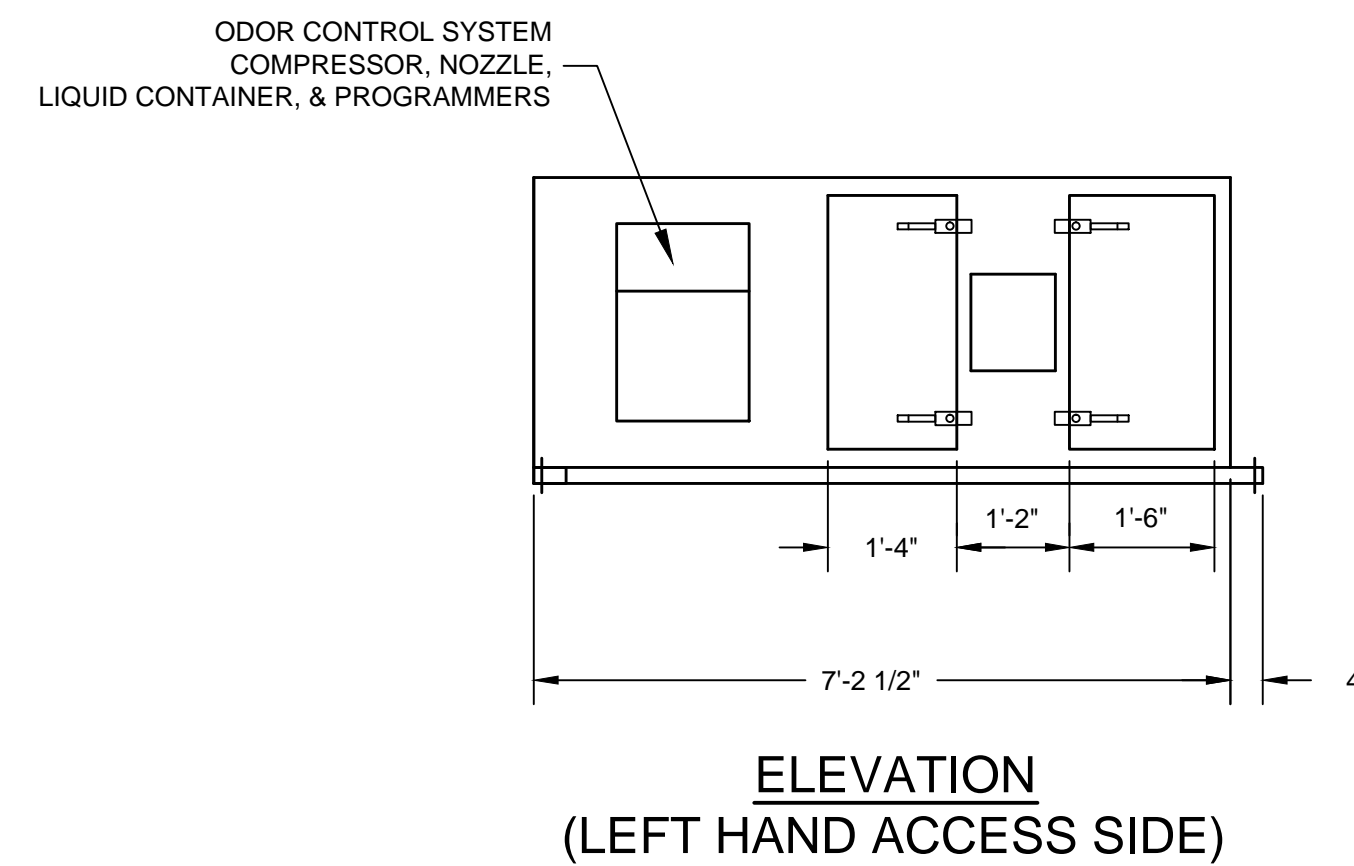
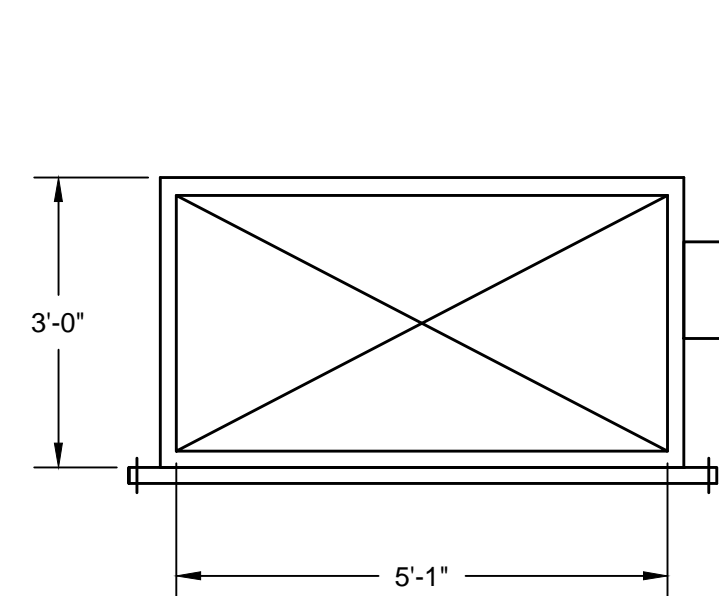
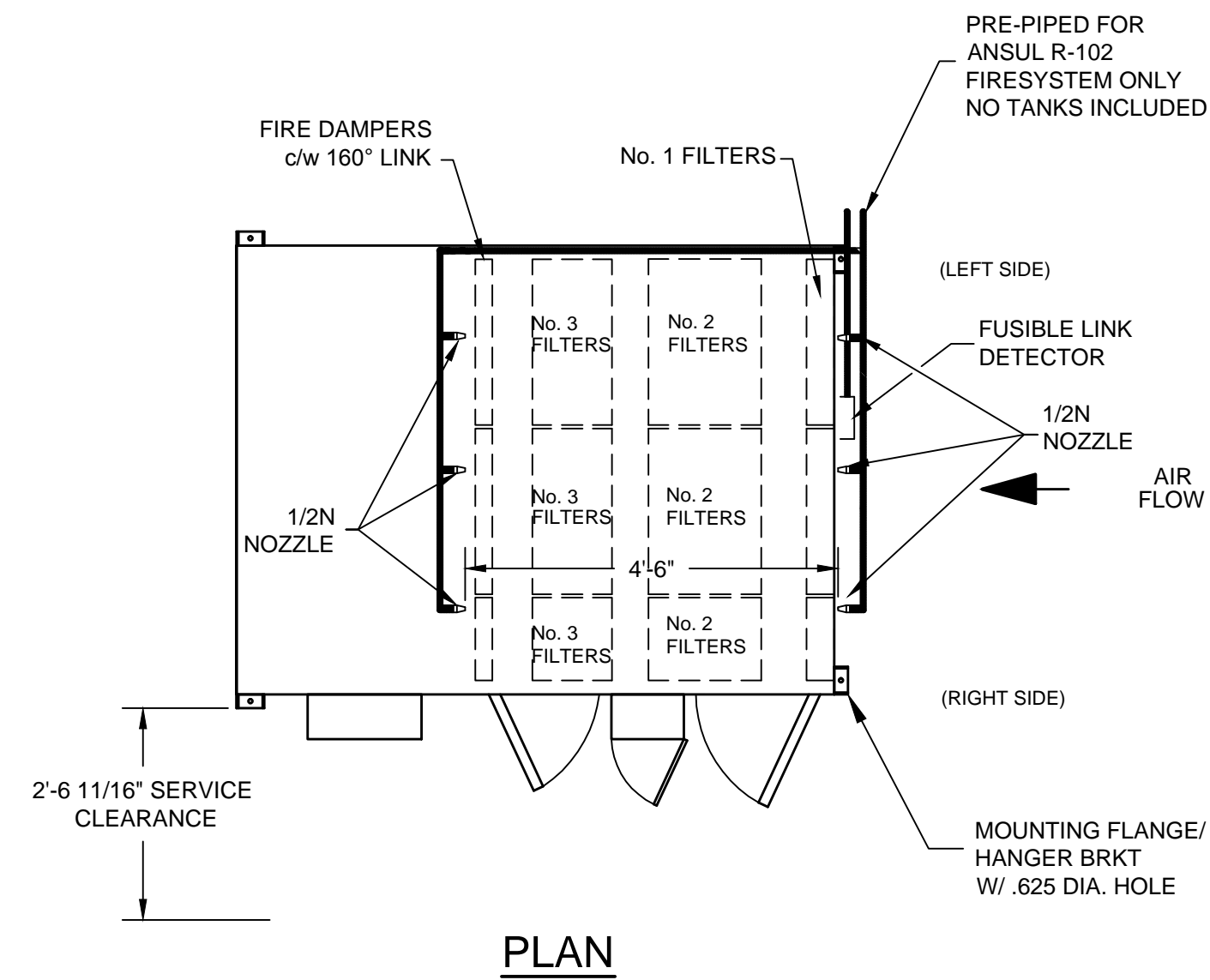
JOB: MICHAEL MINA  
 ST. FRANCIS HOTEL  
 LOC: SAN FRANCISCO, CA.  
 CUST:  
 CUST#:

DATE	05/17/04	SCALE	AS NOTED
DR BY	AGR	APP'D BY	

**DWG# D-2-1059**

SHT 5  
OF 6

# CAS FILTER SECTION



SCALE: 3/4"=1'-0"

**SHOP NOTE:** BUILD PER U.L. CONSTRUCTION METHODS

**GENERAL CONTRACT CONDITIONS**  
 ELECTRICAL WORK DONE BY CADDY CORPORATION IS EXECUTED IN COMPLIANCE WITH STANDARDS PUBLISHED BY THE UNDERWRITER'S LABORATORIES, INC. INSOFAR AS APPLICABLE, AND THE LATEST EDITION OF THE NATIONAL ELECTRICAL CODE (NEC). CADDY CORPORATION DOES NOT ACCEPT ANY RESPONSIBILITY FOR THE REQUIREMENTS OF ANY REGIONAL AND/OR LOCAL CODES THAT ADD OR DEVIATED FROM THE ACCEPTED STANDARDS OF THE ABOVE AGENCIES. ANY FIELD WORK RELATING TO THE MODIFICATION OF ELECTRIC OR PLUMBING SYSTEMS, TO MEET REGIONAL OR LOCAL CODE REQUIREMENTS IS TO BE DONE BY OTHERS AND WITHOUT BACK CHARGES TO CADDY CORPORATION, UNLESS THESE CONDITIONS WERE PREVIOUSLY BROUGHT TO OUR ATTENTION AND ARE EXPRESSLY INCLUDED IN OUR WRITTEN QUOTATION.  
 ALL WIRING AND PLUMBING AT THE JOB SITE IS THE RESPONSIBILITY OF OTHERS. EQUIPMENT WILL BE CONSTRUCTED IN ACCORDANCE WITH OUR DRAWING(S) WHICH MUST BE APPROVED PRIOR TO FABRICATION. ANY SUBSEQUENT CHANGES REQUIRED MUST BE SUBMITTED TO US IN WRITING AND ACKNOWLEDGED ON OUR STANDARD FORM.

FILTER DATA- AT FULL LOAD CAPACITY					GENERAL DATA		MOTOR DATA		
FILTER NO.	TYPE	SIZE	CAPACITY	QTY.	S.P.(IN W.C.)	MAXIMUM AIR EXHAUST	5,000 C.F.M.	HORSEPOWER	10 HP
1	40% PRE-FILTER	24" X 12" X 4"	1,000 CFM	1		DESIGN AIR EXHAUST	4,800 C.F.M.	POWER	6.77 BHP
		24" X 24" X 4"	2,000 CFM	2		TOTAL STATIC PRESSURE	5" W.C.	FULL LOAD AMPS	11
2	95% PLEATED BAG FILTER	24" X 12" X 22"	1,000 CFM	1		EXTERNAL STATIC PRESSURE		MOTOR RPM	1725
		24" X 24" X 22"	2,000 CFM	2		PANEL ACCESS	RIGHT HAND	VOLTAGE	480/3/60
3	95% HEPA FILTER	24" X 12" X 11.5"	1,000 CFM	1		FILTER SECTION WEIGHT	1,724 LBS.	PHASE	3
		24" X 24" X 11.5"	2,000 CFM	2		MOTOR SECTION WEIGHT	1,625 LBS.		
ODOR CONTROL SECTION - 22L "CLEAN AIR" LIQUID MEDIA						MOUNTING	INTERIOR/FLOOR/HANGING		

REVISIONS			
REV	DATE	BY	REMARKS
E	5-17-04	AGR	ADDED THIS SHEET

**CADDY AirSystems**  
 509 SHARPTOWN ROAD  
 P.O. BOX 345 BRIDGEPORT NJ 08014  
 Tel:(856) 467-4222 Fax:(856) 467-5511

**EQUIPMENT SCHEDULE**

ANSUL CAS-KEF-5000

CADDY NO. 1059 ITEM NO. 2

JOB: MICHAEL MINA  
 ST. FRANCIS HOTEL  
 LOC: SAN FRANCISCO, CA.  
 CUST:  
 CUST#:

DATE: 05/17/04 SCALE: AS NOTED  
 DR BY: AGR APP'D BY:

**DWG# D-2-1059** SHT 6 OF 6



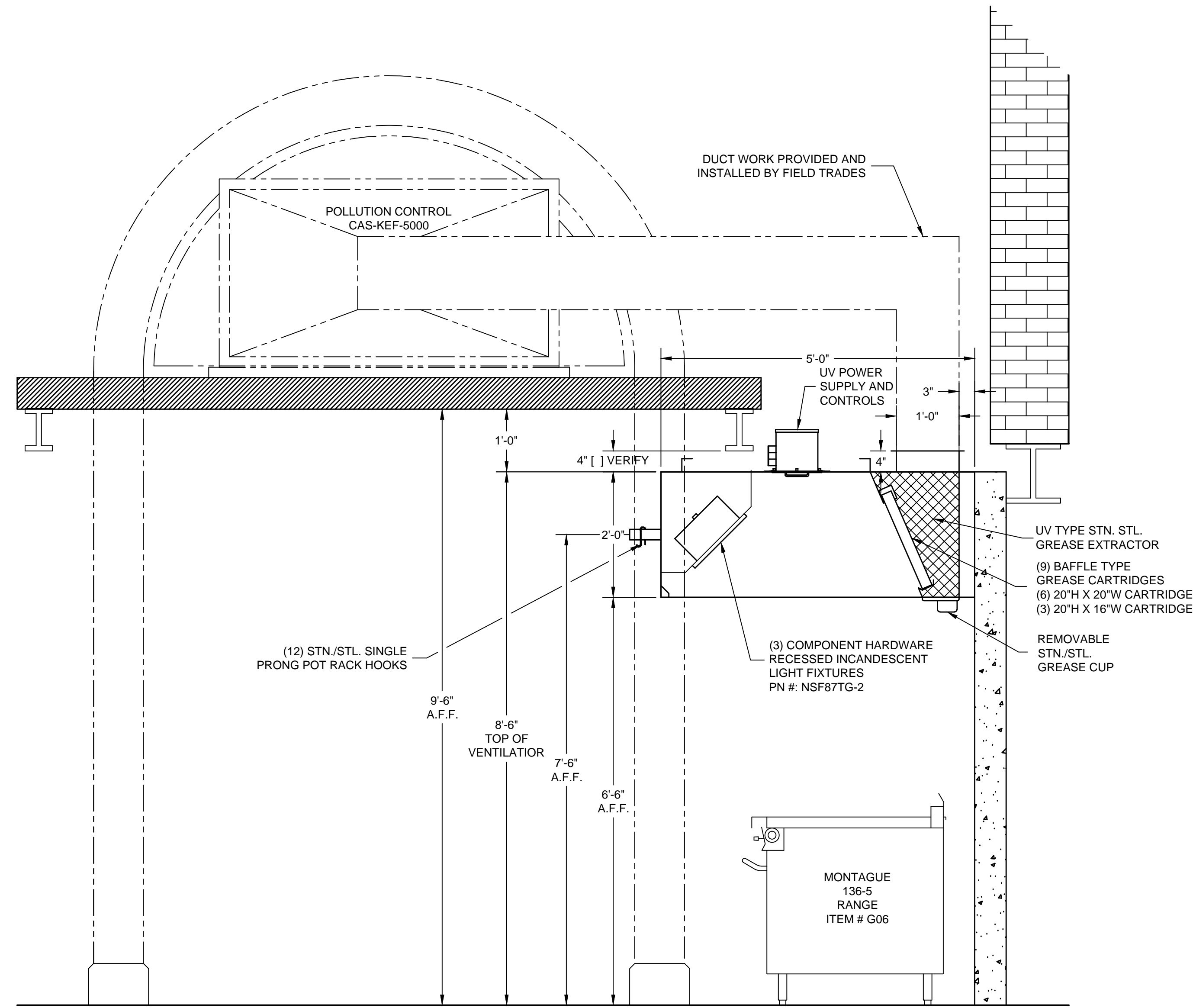
**GENERAL NOTES**

**NOTE:**  
K.E.C. MUST VERIFY THE EXACT DIMENSION OF THE COOKING EQUIPMENT FROM EITHER THE WALL OR FROM THE FRONT OF THE HOOD, SO CADDY MAY PROPERLY LOCATE THE FIRE PROTECTION NOZZLES AT TIME-OF-FABRICATION IN THE FACTORY. IF EQUIPMENT IS NOT LOCATED AS SHOWN AND THE DRAWING IS APPROVED FOR FABRICATION, THEN NOZZLES MUST BE RELOCATED AT THE EXPENSE OF OTHERS.

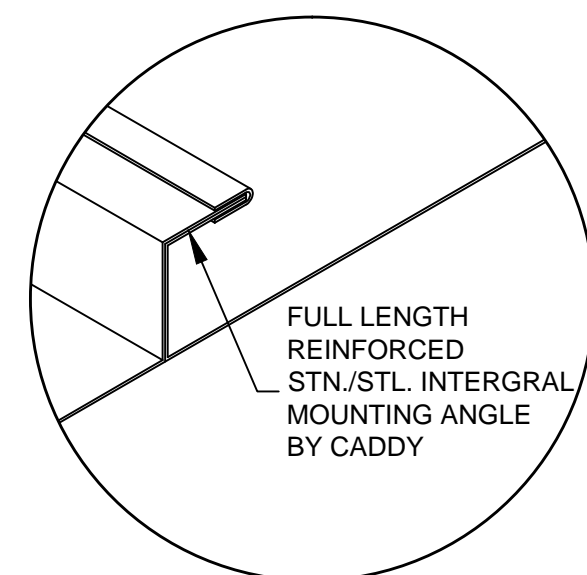
**CONTRACTOR NOTE:**  
ALLOW SUFFICIENT ACCESS ON TOP OF VENTILATOR TO SERVICE COMPONENTS AND UTILITIES

**MAKE-UP AIR NOTE:**  
AIR TEMPERATURE SHOULD RANGE FROM 60° TO 65° F, BUT MAY BE AS LOW AS 50° F DEPENDING ON AIR VOLUME, DISTRIBUTION, AND INTERNAL HEAT LOAD

- EXHAUST AIR REQUIREMENTS:**
- EXHAUST C.F.M. BASED ON 300 C.F.M. PER LINEAR FOOT.
  - EXHAUST STATIC PRESSURE IS 1.60" W.G. AT DUCT TAKE-OFF COLLAR. TOTAL DUCT STATIC MUST BE ADDED. STATIC BASED ON OPERATION AT MEAN SEA LEVEL.
  - DUCT SIZE BASED ON 1800 F.P.M..
- EXHAUST FAN REQUIREMENTS:**
- TYPE - INDUCED DRAFT, SQUIRREL CAGE, BACKWARD INCLINED BLADES, EXHAUST FAN DISCHARGE SHOULD BE VERTICAL, AWAY FROM AIR INTAKES. FAN FURNISHED BY OTHERS.
  - EXHAUST FAN MUST BE FURNISHED WITH A MAGNETIC STARTER WITH 120 VOLT HOLDING COIL. STARTER FURNISHED BY OTHERS.
- MAKE-UP AIR REQUIREMENTS:**
- AIR EXHAUSTED FROM KITCHEN MUST BE REPLACED - WITH DISTRIBUTION CONTROLLED TO PROVIDE FOR TOTAL KITCHEN VENTILATION AND TO ESTABLISH NECESSARY AIR PATTERNS FOR PROPER PERFORMANCE OF THE VENTILATORS. AIR DISTRIBUTION SYSTEMS SHALL BE IN ACCORDANCE WITH ALL GOVERNING CODES.
  - MAKE-UP AIR MUST BE TEMPERED - HEATED OR COOLED - CONSISTENT WITH THE STYLE OF HOOD, HEAT LOAD, CLIMATIC CONDITIONS AND APPLICABLE CODES.
- INSTALLATION:**
- VENTILATORS TO BE INSTALLED IN ACCORDANCE WITH ALL CODES.
- CONTRACTORS MUST REVIEW APPLICABLE CODES WITH CODE AUTHORITIES BEFORE APPROVING DRAWINGS FOR FABRICATION. SPECIAL ATTENTION MUST BE GIVEN TO CODE REGULATIONS RELATIVE TO CLEARANCES FROM SURROUNDING COMBUSTIBLE CONSTRUCTION (WALL, CEILINGS, ETC.).**
- ALL DUCTWORK BEYOND VENTILATOR DUCT TAKE-OFF COLLAR TO BE PROVIDED AND INSTALLED BY OTHERS, IN ACCORDANCE WITH JURISDICTIONAL CODES. DUCTS MUST BE MECHANICALLY STRONG, GREASE AND WATER TIGHT.
  - MOUNTING RODS FURNISHED AND INSTALLED BY OTHERS.
- CONSTRUCTION:**
- VENTILATORS TO BE MANUFACTURED IN STRICT ACCORDANCE WITH CADDY SPECIFICATIONS.
  - VENTILATORS CONSTRUCTED OF 18 GA. STAINLESS STEEL.
- FIRE PROTECTION:**
- SURFACE FIRE PROTECTION PROVIDED AND INSTALLED BY K.E.C.
  - CAUTION: SURFACE FIRE PROTECTION SYSTEM INSTALLATION MUST BE COORDINATED WITH CADDY TO PREVENT SYSTEMS INTERFERENCE WITH VENTILATOR'S OPERATION/PERFORMANCE. IMPROPER INSTALLATION MAY VOID U.L. LISTINGS OF THE EQUIPMENT.
  - IMPORTANT NOTE: NFPA 96 REQUIRES THAT ALL GAS AND ELECTRIC COOKING EQUIPMENT THAT IS PROTECTED BY A SURFACE FIRE PROTECTION SYSTEM MUST AUTOMATICALLY SHUT OFF UPON ACTIVATION OF THE SYSTEM.
- ELECTRICAL REQUIREMENTS:**
- LIGHT FIXTURE BULBS PROVIDED AND INSTALLED BY OTHERS.



**SECTION Z-Z**  
SCALE: 3/4"=1'-0"



**HANGING BRACKET DETAIL**  
SCALE: 1/4"=1"

K.E.C. TO VERIFY ALL MAKES AND MODELS OF COOKING EQUIPMENT, REVIEW PLAN FOR PROPER LINE-UP PRIOR TO FABRICATION OF VENTILATORS, AND TO NOTIFY CADDY OF ANY CHANGES.

**INSTALLATION INFORMATION**

ALLOW SUFFICIENT ACCESS TO BRING VENTILATOR INTO KITCHEN AREA. MAXIMUM VENTILATOR DIMENSIONS 14'-0" LONG x 5'-6" WIDE x 32 3/4" HIGH. ESTIMATED TOTAL HANGING WEIGHT: 1,568 LBS.

VENTILATOR TO BE SHIPPED IN (1) UNIT. ALL PLUMBING AND ELECTRICAL DISCONNECTED FOR SHIPMENT. RECONNECTED IN FIELD BY PLUMBING AND ELECTRICAL CONTRACTORS.

ROUGH-IN SCHEDULE	
SYM	QTY

REVISIONS			
REV	DATE	BY	REMARKS
A	12-19-03	DRA	REVISED TO ULTRA-VIOLET 'C' TYPE GREASE EXTRACTOR
B	1-20-04	DRA	REVISED VENTILATOR PER LAYOUT OF STRUCTURAL BEAMS
C	4-2-04	DRA	REMOVED ANSUL R-102 FIRE SUPPRESSION SYSTEM
D	5-3-04	DRA	REVISED PER APPROVED DRAWINGS
E	5-12-04	AGR	AS-BUILTS

**CADDY AirSystems**  
509 SHARPTOWN ROAD  
P.O. BOX 345 BRIDGEPORT NJ 08014  
Tel:(856) 467-4222 Fax:(856) 467-5511

---

**EQUIPMENT SCHEDULE**

SH-BCU-60

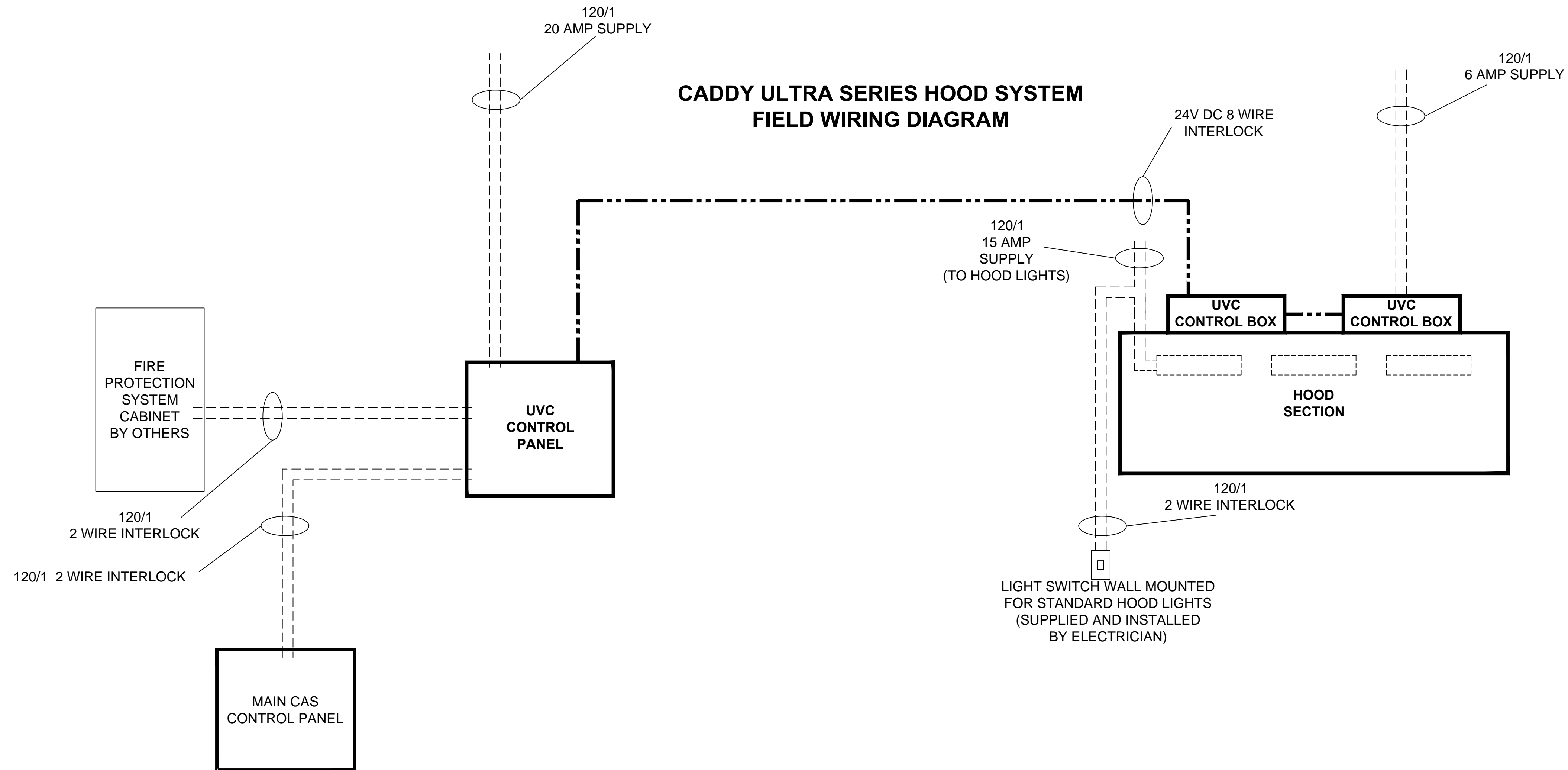
CADDY NO. 0336      ITEM NO. G01

JOB: MICHAEL MINA  
ST. FRANCIS HOTEL  
LOC: SAN FRANCISCO, CA.  
CUST:  
CUST#:

**GENERAL CONTRACT CONDITIONS**  
ELECTRICAL WORK DONE BY CADDY CORPORATION IS EXECUTED IN COMPLIANCE WITH STANDARDS PUBLISHED BY THE UNDERWRITER'S LABORATORIES, INC. INSOFAR AS APPLICABLE, AND THE LATEST EDITION OF THE NATIONAL ELECTRICAL CODE (NEC). CADDY CORPORATION DOES NOT ACCEPT ANY RESPONSIBILITY FOR THE REQUIREMENTS OF ANY REGIONAL AND/OR LOCAL CODES THAT ADD OR DEVIATED FROM THE ACCEPTED STANDARDS OF THE ABOVE AGENCIES. ANY FIELD WORK RELATING TO THE MODIFICATION OF ELECTRIC OR PLUMBING SYSTEMS, TO MEET REGIONAL OR LOCAL CODE REQUIREMENTS IS TO BE DONE BY OTHERS AND WITHOUT BACK CHARGES TO CADDY CORPORATION, UNLESS THESE CONDITIONS WERE PREVIOUSLY BROUGHT TO OUR ATTENTION AND ARE EXPRESSLY INCLUDED IN OUR WRITTEN QUOTATION.  
ALL WIRING AND PLUMBING AT THE JOB SITE IS THE RESPONSIBILITY OF OTHERS. EQUIPMENT WILL BE CONSTRUCTED IN ACCORDANCE WITH OUR DRAWING(S) WHICH MUST BE APPROVED PRIOR TO FABRICATION. ANY SUBSEQUENT CHANGES REQUIRED MUST BE SUBMITTED TO US IN WRITING AND ACKNOWLEDGED ON OUR STANDARD FORM.



# CADDY ULTRA SERIES HOOD SYSTEM FIELD WIRING DIAGRAM



----- 120 VOLT SUPPLY AND INTERLOCK WIRING BY ELECTRICIAN  
 ----- 120 VOLT SUPPLY AND INTERLOCK WIRING BY ELECTRICIAN  
 NOTE : • 20 AMP 120/1 SUPPLY TO MAIN UV CONTROL  
 • 6 AMP 120/1 SUPPLY TO EACH HOOD SECTION  
 • 15 AMP 120/1 SUPPLY TO ONE HOOD SECTION FOR COOKING EQUIPMENT LIGHTS

----- 24 VOLT DC WIRING BY OTHERS

**INSTALLATION INFORMATION**

ALLOW SUFFICIENT AREA TO MOUNT UVC CONTROL BOX ON CLOSEST STRUCTURAL WALL TO VENTILATOR  
 MAXIMUM UVC CONTROL BOX DIMENSIONS  
 14" LONG x 6 3/8" DEEP x 16" HIGH  
 ESTIMATED TOTAL HANGING WEIGHT: 30 LBS.

**GENERAL CONTRACT CONDITIONS**  
 ELECTRICAL WORK DONE BY CADDY CORPORATION IS EXECUTED IN COMPLIANCE WITH STANDARDS PUBLISHED BY THE UNDERWRITER'S LABORATORIES, INC. INSOFAR AS APPLICABLE, AND THE LATEST EDITION OF THE NATIONAL ELECTRICAL CODE (NEC). CADDY CORPORATION DOES NOT ACCEPT ANY RESPONSIBILITY FOR THE REQUIREMENTS OF ANY REGIONAL AND/OR LOCAL CODES THAT ADD OR DEVIATED FROM THE ACCEPTED STANDARDS OF THE ABOVE AGENCIES. ANY FIELD WORK RELATING TO THE MODIFICATION OF ELECTRIC OR PLUMBING SYSTEMS, TO MEET REGIONAL OR LOCAL CODE REQUIREMENTS IS TO BE DONE BY OTHERS AND WITHOUT BACK CHARGES TO CADDY CORPORATION, UNLESS THESE CONDITIONS WERE PREVIOUSLY BROUGHT TO OUR ATTENTION AND ARE EXPRESSLY INCLUDED IN OUR WRITTEN QUOTATION.  
 ALL WIRING AND PLUMBING AT THE JOB SITE IS THE RESPONSIBILITY OF OTHERS. EQUIPMENT WILL BE CONSTRUCTED IN ACCORDANCE WITH OUR DRAWING(S) WHICH MUST BE APPROVED PRIOR TO FABRICATION. ANY SUBSEQUENT CHANGES REQUIRED MUST BE SUBMITTED TO US IN WRITING AND ACKNOWLEDGED ON OUR STANDARD FORM.

LEGEND	
SYMBOL	DESCRIPTION
	FLUORESCENT VENTILATOR LIGHT
	100 WATT DOME INCANDESCENT VENTILATOR LIGHT
	150 WATT RECESSED INCANDESCENT VENTILATOR LIGHT
	BALLAST & CONTROL BOX FOR UVC LIGHT SYSTEM

REVISIONS			
REV	DATE	BY	REMARKS
A	12-19-03	DRA	ADDED THIS SHEET
B	1-20-04	DRA	NO CHANGES TO THIS SHEET
C	4-2-04	DRA	NO CHANGES TO THIS SHEET
D	5-3-04	DRA	REVISED PER APPROVED DRAWINGS
E	5-12-04	AGR	AS-BUILTS

**CADDY AirSystems**  
 509 SHARPTOWN ROAD  
 P.O. BOX 345 BRIDGEPORT NJ 08014  
 Tel:(856) 467-4222 Fax:(856) 467-5511

**EQUIPMENT SCHEDULE**

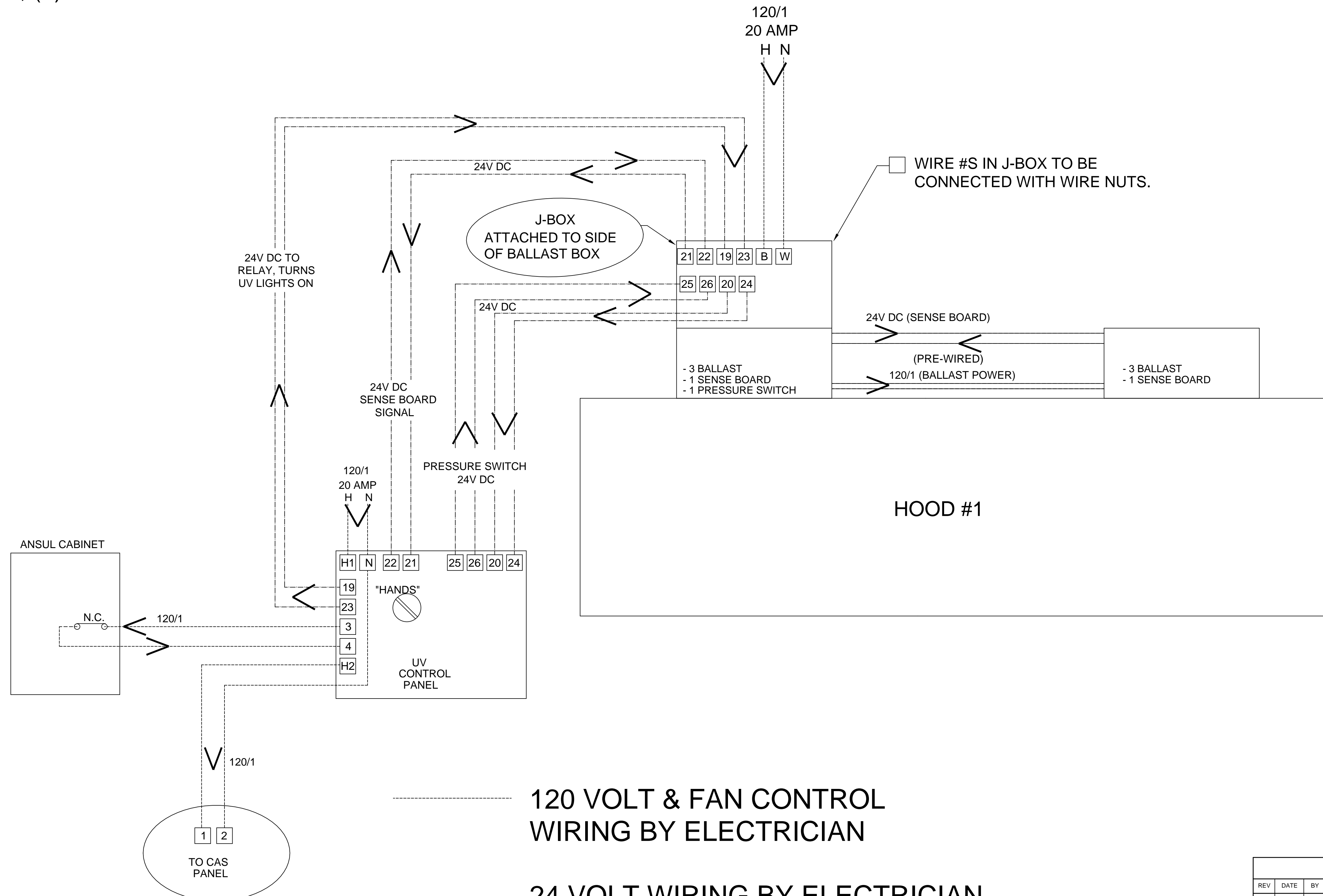
CPE-U

CADDY NO. 0808      ITEM NO. 2

JOB: MICHAEL MINA  
 ST. FRANCIS HOTEL  
 LOC: SAN FRANCISCO, CA.  
 CUST:  
 CUST#:

15592E

# FIELD WIRING FOR UV CANOPY HOOD (1) HOOD, (2) UV CASSETTES



WIRE #S IN J-BOX TO BE CONNECTED WITH WIRE NUTS.

----- 120 VOLT & FAN CONTROL WIRING BY ELECTRICIAN

----- 24 VOLT WIRING BY ELECTRICIAN

**ANSUL CABINET (SUPPLIED AND INSTALLED BY CONTRACTOR)**

**GENERAL CONTRACT CONDITIONS**  
ELECTRICAL WORK DONE BY CADDY CORPORATION IS EXECUTED IN COMPLIANCE WITH STANDARDS PUBLISHED BY THE UNDERWRITER'S LABORATORIES, INC. INSOFAR AS APPLICABLE, AND THE LATEST EDITION OF THE NATIONAL ELECTRICAL CODE (NEC). CADDY CORPORATION DOES NOT ACCEPT ANY RESPONSIBILITY FOR THE REQUIREMENTS OF ANY REGIONAL AND/OR LOCAL CODES THAT ADD OR DEVIATED FROM THE ACCEPTED STANDARDS OF THE ABOVE AGENCIES. ANY FIELD WORK RELATING TO THE MODIFICATION OF ELECTRIC OR PLUMBING SYSTEMS, TO MEET REGIONAL OR LOCAL CODE REQUIREMENTS IS TO BE DONE BY OTHERS AND WITHOUT BACK CHARGES TO CADDY CORPORATION, UNLESS THESE CONDITIONS WERE PREVIOUSLY BROUGHT TO OUR ATTENTION AND ARE EXPRESSLY INCLUDED IN OUR WRITTEN QUOTATION.  
ALL WIRING AND PLUMBING AT THE JOB SITE IS THE RESPONSIBILITY OF OTHERS. EQUIPMENT WILL BE CONSTRUCTED IN ACCORDANCE WITH OUR DRAWING(S) WHICH MUST BE APPROVED PRIOR TO FABRICATION. ANY SUBSEQUENT CHANGES REQUIRED MUST BE SUBMITTED TO US IN WRITING AND ACKNOWLEDGED ON OUR STANDARD FORM.

REVISIONS			
REV	DATE	BY	REMARKS
E	05/14/04	AGR	AS BUILTS

<p>509 SHARPTOWN ROAD P.O. BOX 345 BRIDGEPORT NJ 08014 Tel:(856) 467-4222 Fax:(856) 467-5511</p>	
<p><b>EQUIPMENT SCHEDULE</b></p> <p>FIELD WIRING FOR UV (2) HOOD, (2) CASSETTES</p>	
CADDY NO. 0808	ITEM NO. 2
<p>JOB: MICHAEL MINA ST. FRANCIS HOTEL LOC: SAN FRANCISCO, CA. CUST: CUST#:</p>	

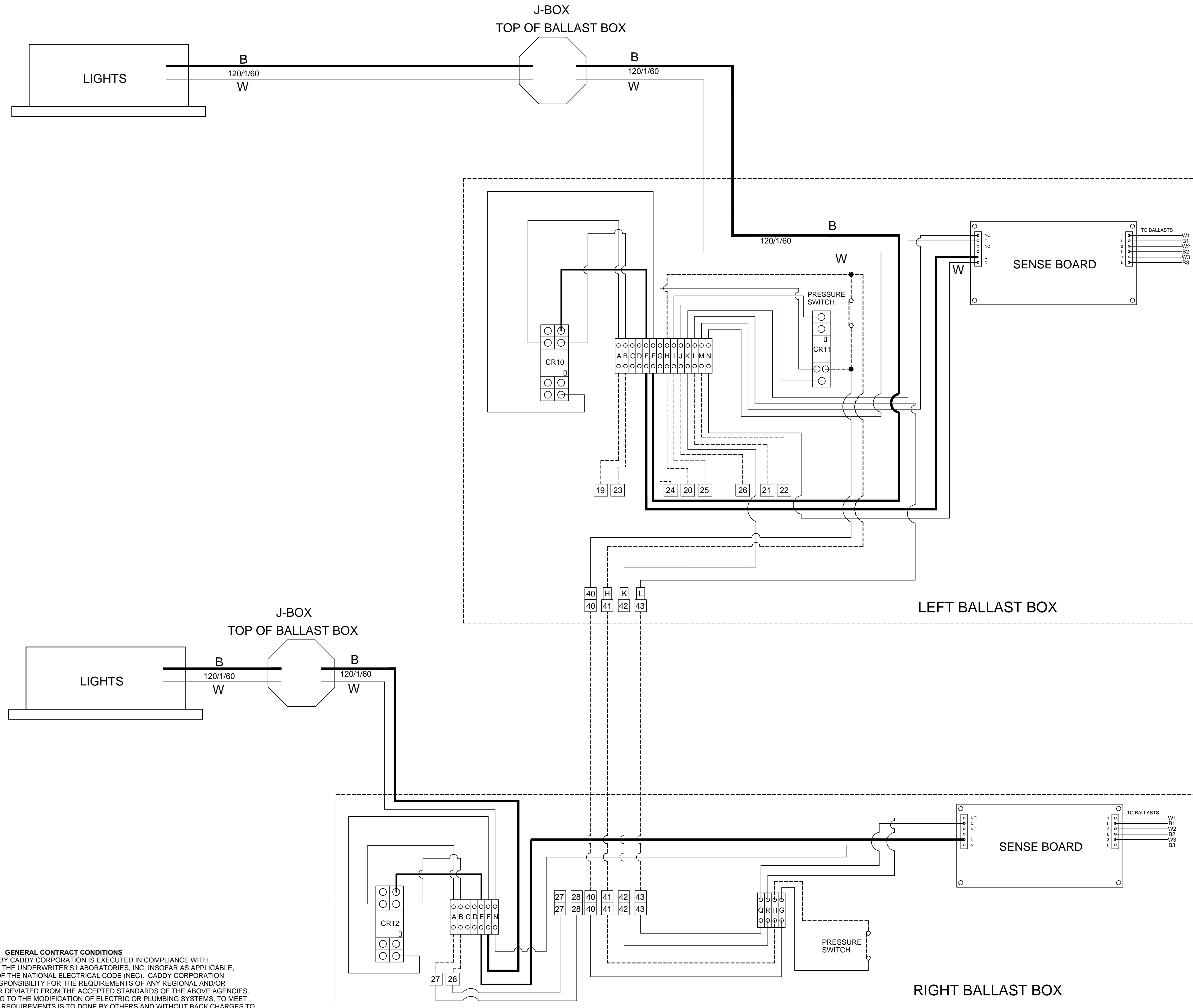
  

DATE	05/14/04	SCALE	AS NOTED
DR BY	AGR	APP'D BY	

<b>DWG# D-1-0336</b>	SHT 4 OF 7
----------------------	---------------

1 CANOPY HOOD (2 CASSETTES)



**GENERAL CONTRACT CONDITIONS**  
 ELECTRICAL WORK DONE BY CADDY CORPORATION IS EXECUTED IN COMPLIANCE WITH STANDARDS PUBLISHED BY THE UNDERWRITERS LABORATORIES, INC. INSOFAR AS APPLICABLE, AND THE LATEST EDITION OF THE NATIONAL ELECTRICAL CODE (NEC). CADDY CORPORATION DOES NOT ACCEPT ANY RESPONSIBILITY FOR THE REQUIREMENTS OF ANY REGIONAL AND/OR LOCAL CODES THAT ADD OR DEVIATED FROM THE ACCEPTED STANDARDS OF THE ABOVE AGENCIES. ANY FIELD WORK RELATING TO THE MODIFICATION OF ELECTRIC OR PLUMBING SYSTEMS, TO MEET REGIONAL OR LOCAL CODE REQUIREMENTS IS TO BE DONE BY OTHERS AND WITHOUT BACK CHARGES TO CADDY CORPORATION, UNLESS THESE CONDITIONS WERE PREVIOUSLY BROUGHT TO OUR ATTENTION AND ARE EXPRESSLY INCLUDED IN OUR WRITTEN QUOTATION.  
 ALL WIRING AND PLUMBING AT THE JOB SITE IS THE RESPONSIBILITY OF OTHERS. EQUIPMENT WILL BE CONSTRUCTED IN ACCORDANCE WITH OUR DRAWING(S) WHICH MUST BE APPROVED PRIOR TO FABRICATION. ANY SUBSEQUENT CHANGES REQUIRED MUST BE SUBMITTED TO US IN WRITING AND ACKNOWLEDGED ON OUR STANDARD FORM.

REVISIONS			
REV	DATE	BY	REMARKS
E	5-17-04	AGR	ADDED THIS SHEET

**CADDY AirSystems**  
 509 SHARPTOWN ROAD  
 P.O. BOX 345 BRIDGEPORT NJ 08014  
 Tel:(856) 467-4222 Fax:(856) 467-5511

**EQUIPMENT SCHEDULE**

BALLAST BOX WIRING

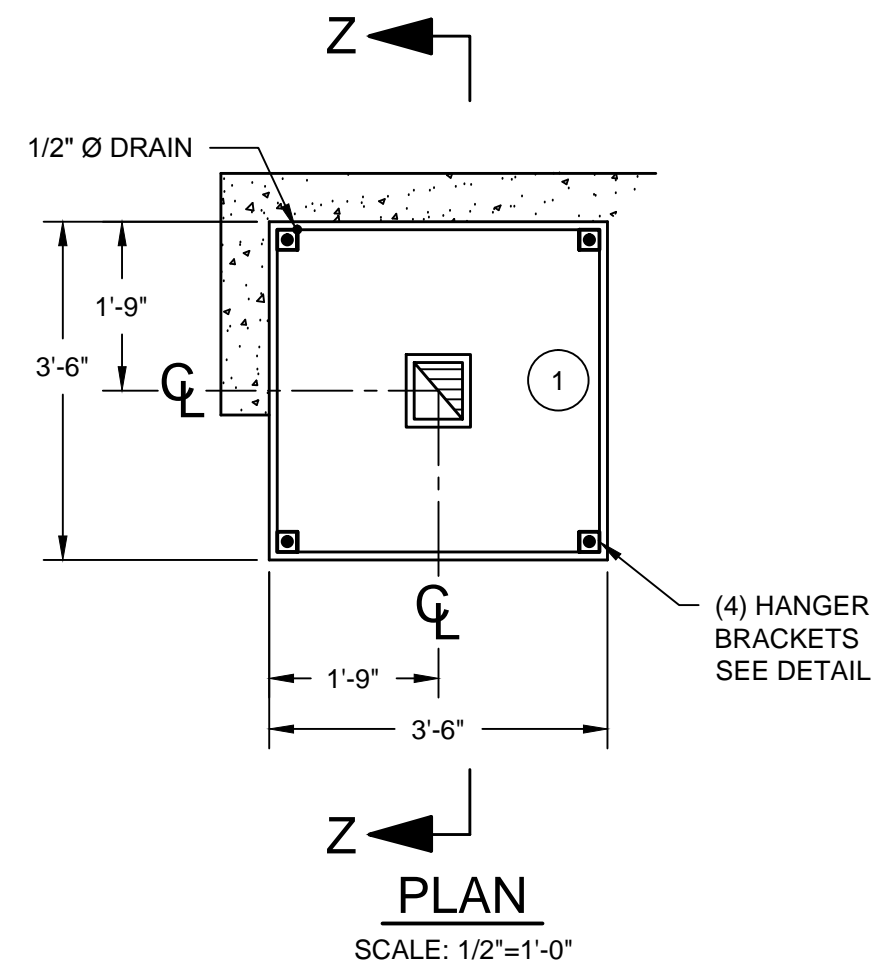
CADDY NO. 0808 ITEM NO.

JOB: MICHAEL MINA  
 ST. FRANCIS HOTEL  
 LOC: SAN FRANCISCO, CA.  
 CUST:  
 CUST#:

DATE 05/17/04 SCALE AS NOTED  
 DR BY AGR APP'D BY

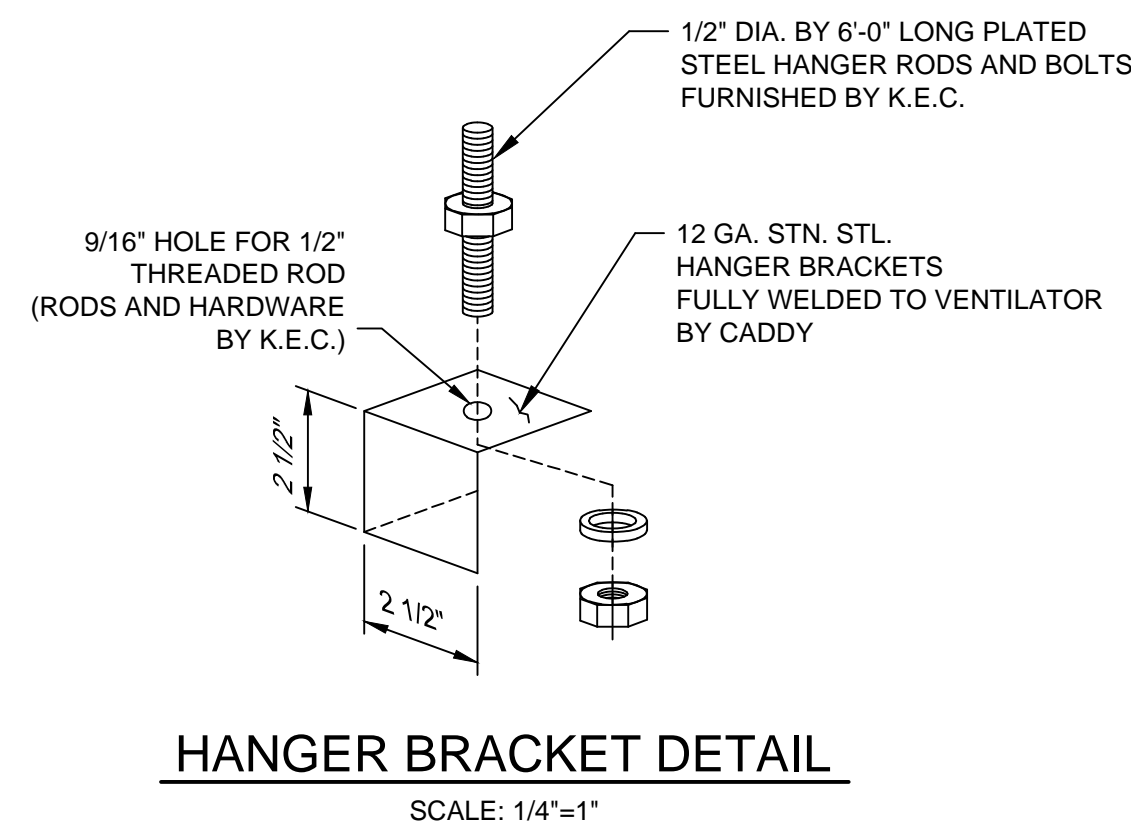
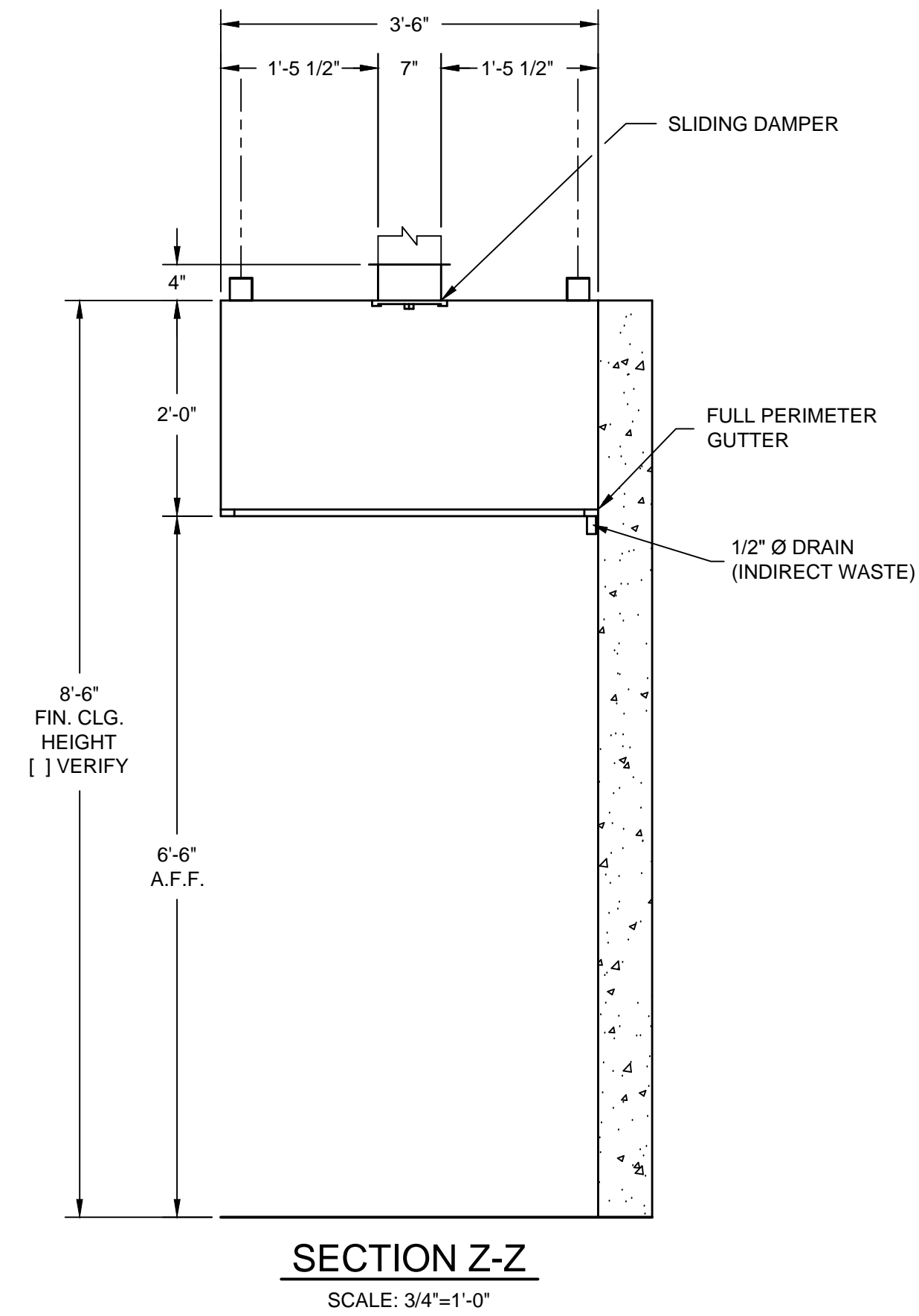
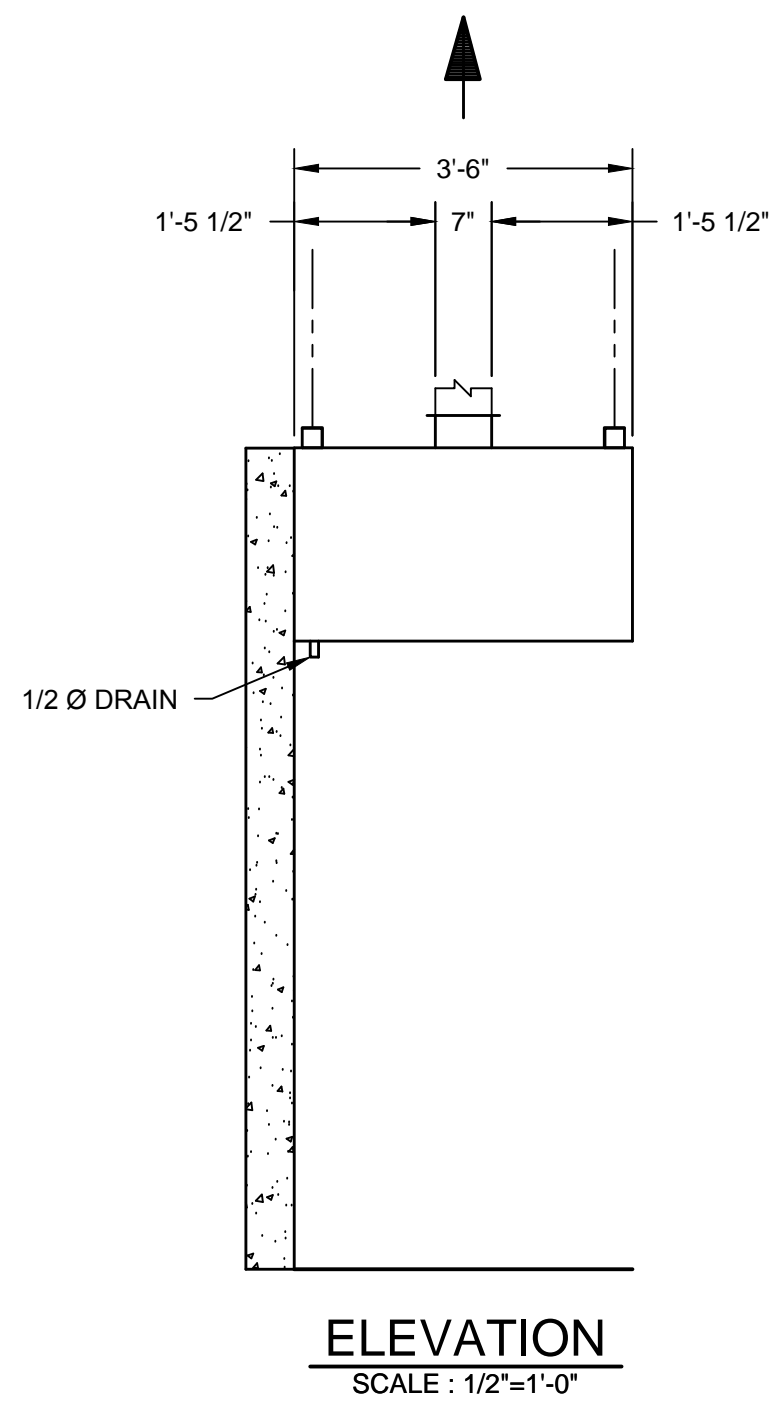
**DWG# D-1-0336** SHT 5 OF 7





TOTAL EXHAUST : 525 C.F.M.

1 6" X 7" EXHAUST DUCT  
525 C.F.M. @ 0.25" S.P.



**HANGER BRACKET DETAIL**  
SCALE: 1/4"=1"

**INSTALLATION INFORMATION**

ALLOW SUFFICIENT ACCESS TO BRING VENTILATOR INTO KITCHEN AREA  
MAXIMUM VENTILATOR DIMENSIONS 3'-6" LONG x 3'-6" WIDE x 28" HIGH  
ESTIMATED HANGING WEIGHT: 175 LBS.

VENTILATOR TO BE SHIPPED IN (1) UNIT.  
ALL PLUMBING AND ELECTRICAL DISCONNECTED FOR SHIPMENT. RECONNECTED IN FIELD BY PLUMBING AND ELECTRICAL CONTRACTORS.

**THE CADDY VENTILATOR TESTING, LISTING AND APPROVAL REFERENCES:**

NATIONAL SANITATION FOUNDATION  
Standard #2 - "Food Service Equipment"



**NOTES**

- AIR SYSTEMS SHALL NOT BE LIABLE FOR IMPROPER FUNCTION DUE TO CHANGE IN STATIC PRESSURE OR AIR VOLUMES SPECIFIED.
- ALL DIMENSIONS TO BE VERIFIED IN FIELD BY OTHERS BEFORE VENTILATORS ARE RELEASED FOR MANUFACTURE.
- INDICATE ALL BEAMS, COLUMNS, ETC. WHICH MAY CONFLICT WITH VENTILATOR OR EXHAUST OUTLET COLLAR(S) (INDICATE SIZE, LOCATION, AND HEIGHT ABOVE FINISHED FLOOR.)
- INSTALLING CONTRACTOR SHALL CHECK ALL BUILDING ACCESS, ENTRANCE AND FIELD CONDITIONS TO ENSURE SUFFICIENT CLEARANCE TO ALLOW VENTILATOR SECTION(S) (SIZE(S) AS DIMENSIONED ON THIS DRAWING) TO BE BROUGHT INTO BUILDING AND INSTALLED ACCORDING TO AIR SYSTEMS RECOMMENDATIONS.
- ALL EXHAUST DUCT COLLARS ARE INSIDE DIMENSIONS. CONNECTION DUCTWORK SHALL SLEEVE INTO VENTILATOR OUTLET(S).
- ALL DUCTWORK BEYOND THE VENTILATOR OR EXHAUST DUCT COLLAR(S) TO BE PROVIDED AND INSTALLED BY OTHERS IN ACCORDANCE WITH JURISDICTIONAL CODES, AND MUST BE MECHANICALLY STRONG, AND GREASE AND WATER TIGHT.
- VENTILATOR(S) SHALL BE N.S.F. APPROVED AND SHALL BEAR N.S.F. LABELS VISIBLY AFFIXED TO EXTERIOR.

**REVISIONS**

REV	DATE	BY	REMARKS
A	12-19-03	DRA	ADDED ITEM # C09
B	1-20-04	DRA	NO CHANGES TO THIS SHEET
C	4-2-04	DRA	NO CHANGES TO THIS SHEET
D	5-3-04	DRA	REVISED PER APPROVED DRAWINGS
E	5-10-04	AGR	AS-BUILTS

**CADDY AirSystems**  
509 SHARPTOWN ROAD  
P.O. BOX 345 BRIDGEPORT NJ 08014  
Tel:(856) 467-4222 Fax:(856) 467-5511

**EQUIPMENT SCHEDULE**

CH-W-42

CADDY NO. 0336 ITEM NO. C09

JOB: MICHAEL MINA  
ST. FRANCIS HOTEL  
LOC: SAN FRANCISCO, CA.  
CUST:  
CUST#:

DATE 12/10/03 SCALE AS NOTED  
DR BY DRA APP'D BY

**DWG# D-1-0336**

SHT 7  
OF 7

**GENERAL CONTRACT CONDITIONS:**  
ELECTRICAL WORK DONE BY CADDY CORPORATION OF AMERICA IS EXECUTED IN COMPLIANCE WITH STANDARDS PUBLISHED BY THE UNDERWRITER'S LABORATORIES, INC. INsofar AS APPLICABLE, AND THE LATEST EDITION OF THE NATIONAL ELECTRICAL CODE(NEC). CADDY CORPORATION OF AMERICA DOES NOT ACCEPT ANY RESPONSIBILITY FOR THE REQUIREMENTS OF ANY REGIONAL AND/OR LOCAL CODES THAT ADD OR DEVIATE FROM THE ACCEPTED STANDARDS OF THE ABOVE AGENCIES. ANY FIELD WORK RELATING TO THE MODIFICATION OF ELECTRIC OR PLUMBING SYSTEMS TO MEET REGIONAL OR LOCAL CODE REQUIREMENTS IS TO BE DONE BY OTHERS AND WITHOUT BACK CHARGE TO CADDY CORPORATION OF AMERICA. UNLESS THESE CONDITIONS WERE PREVIOUSLY BROUGHT TO OUR ATTENTION AND ARE EXPRESSLY INCLUDED IN OUR WRITTEN QUOTATION.  
ALL WIRING AND PLUMBING AT THE JOB SITE IS THE RESPONSIBILITY OF OTHERS. EQUIPMENT WILL BE CONSTRUCTED IN ACCORDANCE WITH OUR DRAWING(S) WHICH MUST BE APPROVED PRIOR TO FABRICATION. ANY SUBSEQUENT CHANGES REQUIRED MUST BE SUBMITTED TO US IN WRITING AND ACKNOWLEDGED ON OUR STANDARD FORM.